



Start here.
Go anywhere.

Prospectus



Loreto
Normanhurst



Acknowledgement of Country

We pay our respect to this ancient Land that breathed life 300 million years ago. A Land that extends from the ridgeline of the Blue Mountains across the soft sandstone plateau to the coast into the ocean. These ridgelines are the water catchment areas. It's where the rain hits first and flows down into our rivers and creeks, rejuvenating the earth and filling waterholes and hanging swamps. A Land kissed by rainbows and home to the tall Blue Gums. We acknowledge this Land as mother to possums, lyrebirds, the laughing kookaburra, the tawny frogmouth and brush turkey. We recognise the deep cultural and spiritual connection of this Land to the peoples of this Country. We honour Elders, those past, present and emerging. We pay respect to all Aboriginal and Torres Strait Islander people within our community.

Welcome



I am delighted to share with you this insight into who we are at Loreto Normanhurst and how we can partner with your family as you discern the path forward for your daughter's education.

The vision of our foundress, Mary Ward, was that a holistic education be made available to all girls, so as to grow young women who are “seekers of truth and doers of justice.”

This mission still resonates with us today as we proudly commit to educating our young women for their time and for the future that awaits them.

A Loreto education is one that motivates our students to be life-long learners, curious and critical thinkers, active leaders of change and compassionate people of faith and social justice.

Our unique Loreto Normanhurst Student Growth Model, strong Pastoral Care structures and diverse, loving community offer every student, from Year 5 to Year 12, the opportunity to develop their individual gifts with confidence, creativity and grit.

I hope you enjoy exploring these pages and discovering the spirited, vibrant environment of our school.

Ms Marina Ugonotti
PRINCIPAL



“Women in
time to come
will do much.”

Mary Ward
1585-1645

Mission

Loreto Normanhurst, which is part of an international family, promotes the pioneering vision of Mary Ward in our Australian and 21st Century context. Our mission translates as our vision as a Loreto school.

Loreto Normanhurst, in the spirit of Mary Ward, as a school community:

- *Encourages* each student to fulfil her academic and personal potential, in an atmosphere of freedom, care and respect for the individual
- *Celebrates* a joyous Christian faith which grows from reflection and leads to justice
- *Develops* independent, articulate and compassionate women of integrity
- *Propels* servant leaders to respond to the needs of the world

Our values

Freedom

Justice

Sincerity

Verity

Felicity



**FOR GENERATIONS OF YOUNG WOMEN,
HERE IS WHERE IT STARTS.**

Loreto Normanhurst is a leading Sydney independent, Catholic Day and Boarding school for girls from Years 5 to 12.

Established in 1897, the school is part of a worldwide network of Loreto schools under the care of the Loreto Sisters (IBVM), and is one of eight Loreto schools in Australia.

Our foundress, Mary Ward, a devout and pioneering English woman who lived from 1585-1645, believed that, "Women in time to come will do much."

We provide opportunities for young women to grow with confidence and compassion, developing modern-day Mary Wards who are ready to take on the world - wherever that may lead them.

“Loreto Normanhurst is a very special school because it has a wonderful sense of *community* and there is no pressure to excel extraordinarily.

You can *be your own person* and the school accepts that and encourages everyone to *flourish* individually.”

Emily Stockwell
Class of 2021



Graduate Attributes

A Loreto education fully realised is the formation of our graduates as 'compassionate warriors;' independent, articulate, compassionate women who are "seekers of truth and doers of justice."

A LORETO NORMANHURST GRADUATE IS...



A woman of *conscious faith* who is empathetic, reflective and possesses gentle strength



A woman of *creativity* who is expressive, imaginative and takes risks



A woman of *independent thinking* who is curious and a critical enquirer and synthesiser

“I leave Loreto wishing to utilise the love of learning and love of community instilled in me to inspire positivity in others and contribute to social justice.

Loreto has taught me the importance of strong communication skills, consideration of the opinions and differences of others, and a steadfast belief that ‘I can, and I will.’”

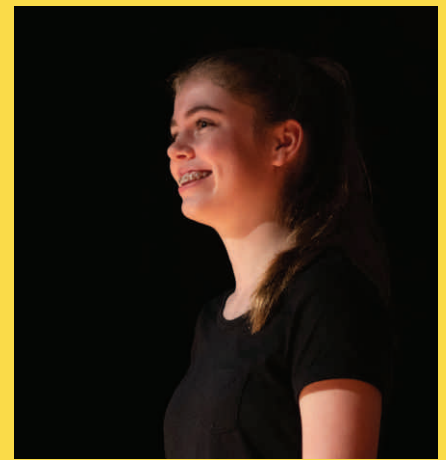
Stephanie Arnold
Class of 2020



A woman of *grit*
who is agile,
resilient and
adaptable



A woman of *service* who
is a leader
and advocate
responsive to her
context



A woman of *voice*
who is confident,
articulate and
considered

Primary

The Teresa Ball Primary Centre reopened for girls in Years 5 and 6 in 2015 and has added considerable joy and diversity to our community.

The Primary School is a nurturing place providing a safe and supported learning experience where students are engaged in an exciting learning journey with their teachers. Primary School staff are passionate about creating an environment that is dynamic, engaging and joyful and responds to every girl's academic, social, spiritual and emotional needs.

The Primary School's flexible, open learning spaces, including the Learning Common and COLA (Covered Outdoor Learning Area), facilitate collaboration and free thinking.

We are proud of our varied and unique offerings in the Primary School, designed to foster leadership and communication skills, resilience and creativity in students. Our Kitchen Garden Club, for example, sees our girls get their hands dirty growing their own herbs and vegetables and our Social Justice Club encourages student-led fundraising and awareness-raising initiatives. Our Frangipani Fair sees Year 6 share their entrepreneurial spirit while building community, and our Robotics program and Year 5 Science Fair encourage proficiency and confidence in STEM.

Students take advantage of the superior facilities and resources made possible by connection to our Secondary School. Students learn from the expertise of specialist teachers in Music, Visual Arts, Languages, PDHPE and Sport. As a member school of IPSHA (Independent Primary School Heads of Australia), primary students have access to a wide range of sports and extra-curricular activities each term, which can be continued into Secondary School.

Due to demand and the flourishing of our Primary community since 2015, we were delighted to introduce a third Year 5 and a third Year 6 class in 2022. We remain committed to 100 places open for Year 7 entry for new day students and boarders.

“If I had to describe Loreto in three words, I would describe it as *welcoming, inclusive and exciting!*”

Lucy
Primary Student



Benefits of attending Years 5 and 6 at Loreto Normanhurst include:

- Small class sizes
- All-girls' education
- Flexibility of Extended Day program
- Consistently strong academic results in Secondary School achieved by girls starting in Year 5
- Strong focus on Pastoral Care
- Early introduction to our Loreto Normanhurst Student Growth Model which drives confidence and independence through our FACE Curriculum (Faith, Academic, Community, Extra-curricular) and broad holistic learning experiences.

“We aim to develop agile and critical thinkers who will become life-long learners. Each of our girls has the opportunity to reach her potential in a safe, supportive and stimulating environment.”

Mrs Maree Board
Head of Teresa Ball



We invite you to visit our website to explore the Virtual Tour of our Primary School, or to book a tour on site for your family.

Secondary



In our Secondary School, we are proud to draw from more than 120 years of experience in educating young women of grit, optimism and integrity through our award-winning Loreto Normanhurst Student Growth Model (LNSGM) for learning and pastoral care.

Day and Boarding students in Years 7 to 12 have access to our flexible learning spaces, innovative resources and unique learning experiences inside and outside the classroom, including Immersion Experiences in Year 8 to 11, Integrated Learning in Years 7 to 10, annual whole-school Music Festival, a range of sports and extra-curricular opportunities, tailored outdoor educational experiences and more.

Our dedicated staff bring a diverse range of expertise and attentiveness to the individual needs of each student. We know that relationships are of utmost importance to student growth, and we prioritise the formation of an active and inspiring community of faith and social justice.

The success of our holistic model for education is proven by our consistent excellence in overall HSC results which can be found on our website.



We invite you to visit our website to explore the Virtual Tour of our Secondary School, or to book a tour on site for your family.

Secondary School *at a glance*

Year 7:

Develop independence and friendship as you transition to Secondary School.

Year 8:

Think critically and collaborate in our ground-breaking subject Integrated Learning.

Year 9:

Experience learning outside the traditional classroom on the Far North Queensland Experience.

Year 10:

Be challenged to solve real world problems during Sprint Week and to foster connectedness during the Homelands Experience in Arnhem Land, Cape York and Central Australia.

Year 11:

Step up as leaders of social justice through Loreto Day initiatives.

Year 12:

Draw from holistic experiences to prepare for life beyond Loreto.

Boarding

“The best thing about boarding is always being with your friends... they make you feel like you’re at *home*.”

Eliza
Junior Boarder

Our boarders add a unique dimension to our wonderful school and are an integral part of the Loreto Normanhurst community.

Loreto Normanhurst was first established in 1897 as a Boarding School, to make it possible for generations of country girls to obtain an education. It is now home to more than 190 girls from the Sydney basin, country NSW, interstate, Australian expatriate families and International families.

Loreto Normanhurst offers full-time boarding for girls in Years 7 to 12, with full flexibility on weekends. For country and city boarders alike, this means boarding all week with greater access to weekend time with family and friends. This model of boarding can also take some of the pressure off busy family life and help students meet their academic and extra-curricular commitments.

Our boarders are encouraged to participate to the fullest extent in school life, to discover their gifts and to take advantage of every opportunity for personal growth. The boarding community has a strong sense of identity and connection with the school, fostering lifelong bonds of friendship.

As part of our Master Plan, our School has committed to the construction of a new ‘home away from home’ for our boarders. This purpose-built Boarding School will combine our 1897 boarding heritage with architectural innovation designed to meet the accommodation, learning and wellbeing needs of boarders in our care. The new Boarding School has a planned opening of 2025.



We invite you to visit our website to explore the Virtual Tour of our Boarding School, or to book a tour on site for your family.

“Loreto boarding is so special because of the connections you form... as well as that tradition of community spirit; the *generations of women* that we’re following.”

Charlotte
Senior Boarder



Our award-winning model of education - the LNSGM

The renowned and proven Loreto Normanhurst Student Growth Model (LNSGM) is the cornerstone of our unique approach to holistic education. The LNSGM transfers to our FACE Curriculum, which places equal value on Faith, Academic, Community and Extra-curricular in the life of each student.

For more information about our model of learning, please visit:
loretonh.nsw.edu.au/pages/learning-in-secondary

“The school doesn’t put emphasis on academic results, but rather what we’ve *learnt* from our time at Loreto.”

Georgia Cluff
Class of 2021



Faith

“This is our vision:
that Loreto schools
offer a Catholic
education which
liberates, empowers
and motivates
students to use their
individual gifts with
confidence, creativity
and generosity
in *loving* and
responsible service.”

Loreto Schools of Australia
Mission Statement

The Catholic Christian faith is woven into all we do at Loreto Normanhurst. At our school, all people are invited to grow in their knowledge and love of God and to embrace the gospel.

Following the model of the Ignatian tradition, we set time apart from the ordinary to strengthen the spiritual, so that we may truly “find God in all things.”

A variety of experiences are offered at the school: the stillness of our midday reflection, early morning Communion Services, a compulsory Sunday evening Boarder Mass, celebrations to mark the Church’s liturgical year and to bring every celebration in our school year into a context of prayer.

Students are immersed in an enlivening liturgical rhythm and are encouraged to see prayer and service as the source of all they do. The Spirituality and Chaplaincy program provides time and space for our community to collectively and individually explore our faith, with Spirituality Days and Retreats held for students and staff.



Academic

“Loreto allowed me to foster a *love of learning*, whereby I was encouraged to ask questions and to explore how I learn, not just to learn the content.”

Lara Ciesiolka
Class of 2020

WE LEARN TO QUESTION THE WORLD.

Loreto Normanhurst provides a holistic education in which each student is challenged to develop her curiosity and capacity for self reflection.

A holistic education in accordance with the Loreto Normanhurst Student Growth Model is one that propels students into their futures. It requires them to be active and compassionate community members, to work effectively with peers and teachers, to have a strong faith which guides their decision making and to strive to achieve their personal academic best. This approach delivers outstanding academic outcomes for students, demonstrated in our consistent excellence in HSC results.

We aim to encourage our students to be life-long learners and critical thinkers who take ownership of their education and foster a broad, determined vision for the future.

We are committed to engaging students in an ongoing process of proactive planning for life beyond Loreto Normanhurst through our dedicated Careers department.

Our Academic Enrichment Program seeks to meet the needs and celebrate the gifts of all students with the help of a Diverse Learning team, Learning Enrichment Faculty, Homework Help and Gifted and Talented Program.



Curriculum subjects offered at Loreto Normanhurst include:

- Aboriginal Studies
- Agricultural Technology
- Business Studies
- Chinese (including Beginners, Continuers and Extension in Years 11 & 12)
- Commerce
- Community and Family Studies (CAFS)
- Dance
- Design and Technology
- Drama
- Economics
- English (including EALD, English Studies and English Advanced, Standard, Extension 1 & Extension 2 in Years 11 & 12)
- Food Technology
- French (including Beginners, Continuers and Extension in Years 11 & 12)
- Geography
- History (including Ancient, Modern and Extension History in Years 11 & 12)
- Hospitality
- Information and Processes Technology
- Information and Software Technology
- Italian (including Beginners, Continuers and Extension in Years 11 & 12)
- Languages and Cultural Studies
- Legal Studies
- Mathematics (including Standard, Advanced, Extension 1 & Extension 2 in Years 11 & 12)
- Music (including Music 1, 2 and Extension in Years 11 & 12)
- PDHPE
- Physical Activities and Sports Studies (PASS)
- Religious Education
- Science (including Biology, Chemistry, Physics, Investigating Science and Science Extension in Years 11 & 12)
- Sport, Lifestyle and Recreation Studies
- Studies of Religion 1 & 2
- Technology
- Textiles Technology
- Visual Arts
- Visual Design



ELIZABETH HEILMAN

CLASS OF 2023

“ONCE
LORETO
YOU’RE
WITHO
YOU’RE
WITH O
YOU’RE
A SISTE

YOU JOIN THE
O COMMUNITY,
E LOVED
UT JUDGEMENT,
E SUPPORTED
COMPASSION AND
E VALUED LIKE
ER.”

Community

“I loved my time at Loreto and whilst there are so many positives I can mention, the one that has been so important for me has been the feeling of *community - a bond of friendship* and a support network.”

Karen Robinson
Class of 1986

The strength of Loreto Normanhurst, as a vibrant community for students, parents, staff and alumnae, extends across Australia and around the world.

The breadth of our network enriches the diversity of experiences offered to students, particularly through opportunities for outreach and real-world engagement. Our relationships with industry, academic and not-for-profit partners enrich our Careers, Learning, Extra-curricular and Immersion programs through initiatives such as Year 10 Sprint Week, Careers Week, Loreto Rural Partnership, Mentoring and more.

The school has an active Parent Association and Ex-students' Association which are supported by the Principal and Leadership Team, and who continue to develop and maintain close relationships within our Loreto community.

“Through my involvement with the school I have many wonderful and special friends in Sydney and, through Loreto Federation, all over Australia. Normanhurst has been *far more than just a school!*”

Gail Graham (née Garner)
Class of 1957



Community

“Wellbeing was always at the forefront of everything that happened at Loreto. This worked to create a supportive and safe environment in which us girls were able to take on new challenges with the knowledge that the school was *always* behind us.”

Grace Thomas
Class of 2020

PASTORAL CARE

The aim of our strong Pastoral Care program in the Day and Boarding Schools is to know and guide each student to develop optimism, initiative, resilience, confidence and sound judgement in a supportive and connected educational environment. Each student enjoys a sense of belonging and security in her House, which is led by staff and student leaders and forms the basis of Pastoral Care structures. The Primary School has three Houses which allows for camaraderie and leadership opportunities. The Secondary School has eight Houses with a vertical Tutor Group system. A student and her Tutor or Advisor engage in regular one-on-one conversations to encourage reflection on a student's growth.

The school also has a dedicated Pastoral Care leadership team, including the Director of Pastoral Care and Heads of Houses, as well as school counsellors on site.

A key aspect of Pastoral Care at Loreto Normanhurst is the opportunity for student leadership, particularly in Years 5 and 6, and Years 11 and 12. Year 11 leaders choose a cause and facilitate awareness-raising and fundraising for the annual Loreto Day. The elected Year 12 Student Council work alongside staff to promote the Loreto charism in daily student life.



OAKSEED

We were delighted in 2021 to launch oakSEED. This bespoke wellbeing program, developed in consultation with leading child psychologist Dr Danielle Einstein, develops five core social and emotional competencies that support learning and development: self-awareness, self-management, responsible decision-making, relationship skills, and social awareness. The OakSeed Program consists of learning experiences delivered holistically within the Integrated, PDHPE and Pastoral curriculums.

'IT TAKES A VILLAGE' - PARENT ENGAGEMENT AND EDUCATION PROGRAM

We know that a strong partnership between our School and families is of utmost importance to the wellbeing and growth of our students. Parents are firmly involved in their daughter's learning and Pastoral development through regular Plenary Meetings with teachers and Tutors/Advisors. We are also pleased to offer a series of expert seminars and workshops through our Parent Engagement and Education program.



oakSEED



For more information about the 'It Takes a Village' program, we invite you to visit our website.

Extra-curricular

WE LEARN TO TAKE A DIFFERENT PERSPECTIVE

Loreto Normanhurst prides itself on being a school where all students can find a way to succeed and shine in one or many areas. We have an extensive Extra-curricular program (the “E” in the FACE Curriculum) which equips our students with the ability to be innovative, creative and empathetic and teaches them the value of teamwork and how to deal with failure.

Our Extra-curricular program offers students a range of opportunities to have fun and to discover what they are passionate about. Every Loreto Normanhurst student is encouraged to pursue a variety of extra-curricular activities throughout their school years.

The school supports the many students who participate at an elite level in their chosen extra-curricular pursuit including sport, oratory, music and dance.



For more information on our Extra-curricular program, we invite you to visit our website.



“I love the extra-curricular activities because you can try *something extra*, find what you really love and learn more every day.”

Isabella
Primary Student



Examples of our extra-curricular activities include:

- Chess & Strategic Games
- Debating & Public Speaking competitions
- Ethics Olympiad
- Extensive range of sport opportunities
- Green Team
- Immersion and tour opportunities
- JPIC Social Justice Group
- Mock Trial and Mock Mediation
- Music Ensembles and Choirs
- Philosophy Club
- Photography Club
- Private Music Tutelage
- Student Newspaper
- Textiles Open Studio
- Visual Arts Open Studio
- Yearbook Committee





Strong
women
unite.

Extended Day & Academic Coaching Programs

EXTDAY@LN

Research shows that routine supervised study time improves student learning outcomes, particularly when students are supported by adults with knowledge of the curriculum demands of schools.

EXTDAY@LN (Extended Day at Loreto Normanhurst) is an optional after-hours study program for Day girls in Years 5 to 8 and is intended to meet the needs of families, while also improving individual student growth. It is available from Monday to Thursday during term time from 3.15pm to 8.00pm.

The program offers flexibility around school pick-up times and the opportunity for students to receive extensive after-hours supervision, homework help and guided study, supported by qualified teachers and supervisors. Incorporated into this offering is a variety of supervised recreational activities plus access to extra-curricular activities held in the school grounds.

Academic Coaching@LN

Academic Coaching@LN is an after-school program offered to all students in Year 9-12. The Academic Coaching program offers students the opportunity to work in groups of 5 to 6 students, with a subject matter expert in Year 9 to 12 English & Mathematics.

The Academic Coaches are qualified teachers or current university students who have proven expertise in the requisite subject matter. Afternoon tea is included in the daily charge. Afternoon tea and dinner is also included in the daily charge.



To discover a typical afternoon at our Extended Day Program, we invite you to visit our website.



Our Campus

At Loreto Normanhurst, we take pride in our school and this is reflected in our well-maintained campus which contains the full range of facilities necessary to cater for all areas of study and interests.

The School is set in spacious grounds of over 25 acres, on the edge of bushland, and is a pleasant mix of historic and modern buildings. The beautiful ovals, well-tended gardens, playgrounds, tennis and basketball courts, Gymnasium, Fitness Centre, and Aquatic Centre with a 25-metre indoor swimming pool, make up the superb facilities that support our Day and Boarding students.

Loreto Normanhurst's facilities incorporate the traditional, heritage buildings that can house over 200 boarders, to our modern facilities for Science and Integrated Learning. In April 2013, the Gonzaga Barry Centre was opened which introduced a state-of-the-art teaching and learning facility with flexible and multi-purpose spaces.

The Mary Ward Health and Wellness Centre is open from 8am until the end of the school day and is staffed by three Registered Nurses, five Schools Counsellors and a First Aid qualified receptionist. In addition, Nursing staff provide first aid to staff and students and are also available for advice in person or over the phone.

Other facilities of note include the Chapel, built in 1953, and the Library which was built in 2000, and houses an extensive collection of fiction, non-fiction, and diverse electronic and printed educational resources.

Loreto Normanhurst undertakes building developments in a strategic and well-planned manner that is guided by the Loreto Normanhurst Master Plan. We pride ourselves on building developments which mirror curriculum and leading educational programs.



Flexible Learning Spaces



Mother Evangeline Kendall Visual Arts Centre



Chapel



Mary Ward Health & Wellness Centre



Library



Gymnasium & Hayden Fitness Centre



Veronica Reid Oval



Aquatic Centre



Tennis, Basketball & Multi-purpose Courts



Drama Space

Our Master Plan

Loreto Normanhurst has been developing a Master Plan to guide the planning of the campus over the next 30 years.

The School's growth is planned over four stages delivered across the 30 years. The overall proposal aims to increase the student capacity incrementally by 850 students by the year 2047.

The Master Plan will unfold with the gradual redevelopment or replacement of current buildings to create an innovative, unified, sustainable, and ecologically sensitive campus.

By updating our spaces and surroundings, our Master Plan helps us build our community and propel our students into their futures as 'compassionate warriors.'

2022 saw the completion of collaborative learning spaces in the Mary Ward Centre, the opening of St Michael's Tennis Courts and updates to the traffic management system, amongst other exciting projects.

In 2023 our focus will be on three key areas:

1. The construction of our upgraded Agricultural Technologies Building.
2. The development of our new Boarding School, due to open in 2025.
3. Planning for the upgrade of the Veronica Reid Oval and for the repurposing of the buildings and spaces which are currently occupied by the Boarding School.





Our New Boarding School

The vision for our new Boarding school is a lively home away from home containing a variety of spaces that set the stage for the rhythms of boarding life.

The new building will feature common gathering spaces for social and recreational use, communal areas for boarding families, updated accommodation for boarding staff and improved accessibility for students with specific access needs.

The expanded facilities will position areas of the Boarding School as a resource for everyone in the school and will enrich the friendships, opportunities, and experiences available to students and all members of our community. A large dining room will allow boarders to eat together and, during the day, will also welcome day students to the cafeteria. Large, tiered seating will be a perfect location for group chats, quiet reading or studying, or school choir rehearsals.

A family lounge will allow for families to visit their daughter and will give them a comfortable and inviting space to sit together. Multiple common rooms on each floor will have lounge and TV areas, games areas and some cooking facilities to allow boarders to prepare a quick snack or cook a batch of biscuits together after school. We will have quiet spaces including a study hub, outdoor teaching areas and music rehearsal rooms.

Construction will commence in 2023, with a planned opening in the 2025 school year.

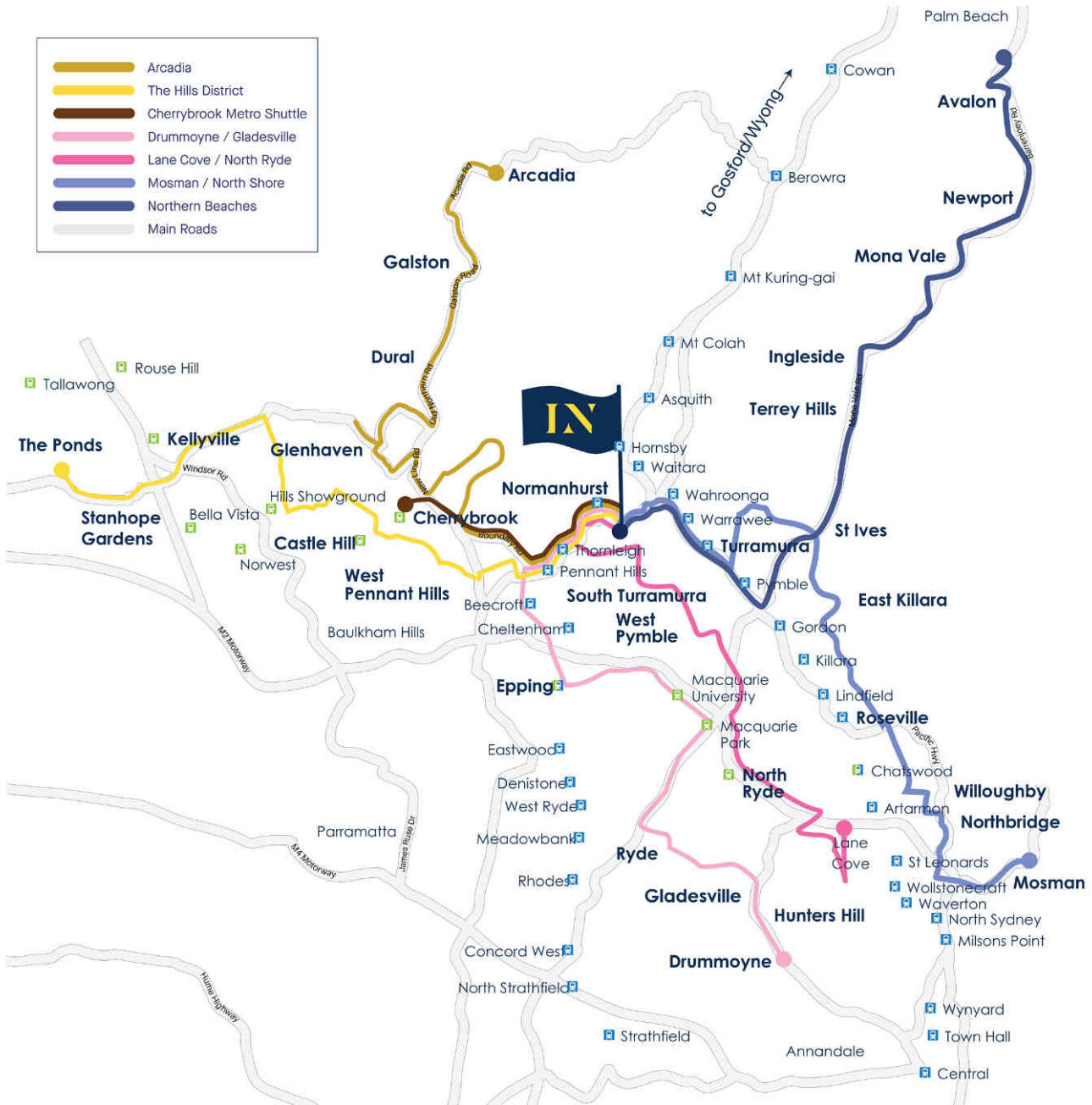
Getting to Loreto Normanhurst

Located on Sydney's leafy upper North Shore, our school is set on the edge of bushland in spacious grounds of more than 25 acres. The grounds consist of heritage buildings dating back to our 1897 foundation, alongside new open learning environments designed to facilitate collaboration and flexibility.



We invite you to visit our website to find our Transport Access Guide for more information.





Situated on Pennant Hills Road, our school is close to the exits for the M1, M2 and M7. It is well served by public transport with Normanhurst Railway Station approximately 400 metres from the school. Public buses specifically for school students run directly to the school from the North Shore, Hills District, Arcadia, Cherrybrook, Castle Hill, St Ives and Northern Beaches areas. The Government M60 Service also has a stop at the school gate on Pennant Hills Road.

Private Bus Service

Loreto Normanhurst provides six dedicated private buses for transport to and from the school every day of the school term, dropping off and picking up students in Years 5 to 12 inside the school grounds. Routes include Lane Cove/North Ryde, Drummoyne/Gladesville, Mosman/North Shore, the Hills District, Arcadia, Northern Beaches and the Cherrybrook Shuttle.





First Loreto. Then the world.



Next Steps

Enrolment is as easy as
1, 2, 3, 4, 5!



Our intake years are Year 5 for Primary School and Year 7 for Secondary School.

We commence with the enrolment process a little over two years in advance for our Year 5 and Year 7 intake; and one year in advance for all other years. Applications are subject to availability at all stages of the enrolment process. Priority is given to Alumnae, to those with sisters already attending, and to country boarders.

When the enrolment process commences, families will be invited to attend a Parent Information Evening where you will hear from our Principal, Ms Marina Ugonotti, as well as other key Leadership Team members about the benefits of a Loreto Normanhurst education.



For more information, visit our website to:

[Review the Enrolments Guidelines](#)

[Book an Onsite Twilight Tour](#)

[Review our Fees and Charges](#)

[Find out about Scholarships and Bursaries](#)

How to Apply

1 Application

We encourage the early submission of applications (accepted from birth).

The Application for Admission form must be completed and submitted together with the student's Birth Certificate and Australian Proof of Citizenship (if applicable) and payment of the non-refundable Application Fee for the student to be placed on the Waitlist.



2 Enrolment | 📅 July

At the commencement of the Enrolment Process, two and a half years prior to year of entry, families will be invited to attend a Parent Information Evening and may be invited to complete and submit the Enrolment Documentation.



3 Interview | 📅 December - March

Two years prior to year of entry, families may be invited to attend an interview with the Principal or a member of the Leadership Team.



4 Offer | 📅 February - April

Upon successful completion of the interview process, offers of places are made, subject to availability and at the discretion of the Principal.



5 Acceptance of Offer

Parents will then be given the opportunity to accept an Offer of Confirmed Enrolment by signing the Acceptance of Enrolment Agreement and paying the non-refundable Enrolment Fee.



91-93 Pennant Hills Road
Normanhurst NSW 2076
Australia

www.loretonh.nsw.edu.au

enquiries@loretonh.nsw.edu.au

1800-LORETO



This cover is printed on
100% recycled paper.



Loreto
Normanhurst