




GRACE
LUTHERAN
COLLEGE
EST. 1978



*God saved you
by his grace...
we are God's
masterpiece...
so we can do the
good things he
planned for us
long ago.*

Ephesians 2:8-10



CABOOLTURE.



THE GRACE WAY.

Grace Lutheran College is, by the grace of God, a Christian community. It aims to continue the preparation of young people for a life of faith and service so that God will be glorified in the world.

THE GRACE WAY...

It's not just what we do but the way we do it.

The Grace Way is about the small gestures that mean big things to Grace families. When your child joins Grace so do you. We welcome your entire family into our community.

Together, we are Grace.

We exist because our community, parents just like you, wanted a school like Grace. The Rothwell Campus was established in 1978 by the Lutheran Church in response to requests from the Redcliffe community. Following similar requests from the Caboolture community, Grace Caboolture Campus was established in 2008.

Many of our families say they chose Grace because of how we make them feel – the warm actions, selfless gifts, altruistic endeavours and kind words. They entrust their children to us, safe in the knowledge that Grace provides a secure, supportive environment for all students.

When children are born their world is full of possibility. As a parent, you want to give them every opportunity to achieve their dreams. At Grace, we know that not everyone is a scholar, not everyone is good with their hands, not everyone is good on the sports field or dance floor, but everyone is good at something. Our role is to help students discover it.

Every child can experience Grit at Grace.

Every child can Grow at Grace.

Every child can find Grace at Grace.

Your aspirations are ours – we work in partnership with our parents to encourage your child to uncover who they are and explore what they love doing. As their confidence grows so does their capacity to strive towards their ambitions.

This is the Grace Way.





GRIT.

We know that successful adults combine excellence in their chosen field with character. A key component of character is grit, a mix of passion, perseverance and patience.

GRIT. A PASSION TO STRIVE FOR

“He has returned as a more mature, considerate, respectful, appreciative and humbled young man. He has overcome some big physical, mental and emotional hurdles to have the experience of a lifetime that will have definitely helped to shape him into the man that he will become.” Parent of student recently returned from Googa Outdoor Education experience.

We know that successful adults combine excellence in their chosen field with character. A key component of character is grit, a mix of passion, perseverance and patience. Young people with grit never give up, they get the job done, they break through barriers, they learn through trying even if the effort is hard.

At Grace your child will have many exciting new things to try – inside and outside the classroom. We help them uncover what they are good at and guide them to become better at it. With **an extensive range of curricular and co-curricular options** from Arts to Science to Music to Sport to Service to Debating – we’re confident your child will discover their passion.

We offer our students the opportunity to take safe risks because we know that it is only by practising how to deal successfully with change and challenge that they build their resilience ‘muscle’.

A highlight of the curriculum is **Googa, a beautiful Outdoor Education facility** near Blackbutt, and our third campus. All Year 10 students attend Googa for four weeks under the direction of highly trained and specialised staff. Through a staged approach, our students are immersed in activities that they might otherwise miss or take for granted in the home environment. These include adventure activities, hiking, camping, daily cooking, washing and cleaning, responsibility for feeding livestock, preparing devotions, as well as journal and letter writing. Skills learnt at Googa assist them to grow academically and personally in the final two years of school and beyond. The aim of this journey is for the students to hone self-reliance and teamwork skills, and understand their spiritual path.

At Grace we demand respect – of each other and most importantly of ourselves. We teach your child that **character means**

choosing what is best even when no one is looking. We mentor our students to become accountable for their behaviour and repair harm through a clear and consistent process for behaviour management and conflict resolution.

Grit means looking outwards as well as within – having an awareness of the world around us and a willingness to get involved. Grace students are given many opportunities to learn and serve in the **local and global communities**. Grace has partner schools in Japan, Germany, Indonesia and China, with students and staff also able to visit Cambodia and other countries at times for enriched learning and serving opportunities. We know that when you meet different people face-to-face in challenging contexts, it takes courage, but it changes you for the better.





GROWTH.

Young people with a growth mindset are confident, successful, purposeful, engaged, creative and co-operative.

GROWTH. A PERSON TO BECOME

"I don't need to be the best IN the world, but to do my best FOR the world." Year 11 student

"We have a new person in our house who once again loves school, learning and all things new: we are really grateful."

Letter from a Grace parent

At Grace we encourage **excellence and effort**: just showing up isn't good enough, we want our students to grow and change through testing themselves against their personal best every day. It is important to know though that your child can feel proud of themselves even if they don't come first. They learn that true success is always measured by their own possibility, not against the achievements of someone else.

Young people with a growth mindset are confident, successful, purposeful, engaged, creative and co-operative. We believe in our students and inspire them to believe in themselves. We know they can do more than they think they can and teach them that mistakes are simply opportunities for learning, not excuses for giving up.

Grace supports our students as they develop into independence with role modelling and some gender-specific programs to **develop young men and women of substance**. We believe that leadership is a vital part of a senior student's role, and all students are able to serve as leaders in a range of areas:

Student Representative Council, volunteer academic tutors and ambassadors, and through mentoring younger students in performing arts, sports and faith and service activities.

Your child is given clear goals and we track individual students' progress. Timely feedback to students and parents is provided so no-one falls through the cracks. Grace offers targeted literacy and numeracy development as well as an **extended academic enrichment program and learning support** with specialist teachers.

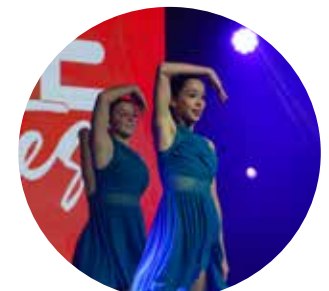
Thanks to the growth of our reputation in challenging and extending students with significant academic gifts, Grace is attracting a growing number of students who are interested in these opportunities. We believe the world needs gifted people who develop and use what they have for the sake of a better world.

A happy student is an engaged student. School can be a serious business at times but we recognise that young people need to

enjoy learning and know that, particularly in secondary school, they also need plenty of variety and challenge. They want teachers who take them seriously, but who also have a sense of humour. At Grace, learning is 'hard fun'.

Creative expression isn't just through the arts; your child will be stimulated to pose and solve problems, design, make and do beautiful things in all areas of the curriculum. They will also join a team – whether in the classroom or beyond – and learn the skills of working with others to achieve a goal.

Whether your child is at the beginning in Year 7 or is nearing the end in Year 12, they will face many decisions including subject choices, career paths and social interactions. By teaching our students that choices have consequences and that we stand beside them as they make those choices, we help them navigate through the important decisions required as they grow through their school journey.



GRACE. A PURPOSE TO LIVE BY

"My son stands straight. He knows who he is." Parent of past student

"Grace is a fitting name for this school." Year 12 graduate

Grace is a **Christian community** united by a belief in God's grace: God loves us and wants the best for our lives. We respond by caring for each other and welcoming others, even if they are different from ourselves. As a family, we work together as teachers, parents and students in the lifelong process of Christian education. We aim to help each other develop, not just knowledge, but wisdom, and to nurture each other into whole people.

Young people with grace are valued, they feel included, safe and supported. As a consequence, they are thoughtful, helpful, empowered and hopeful. Because we believe God's love is a free gift available to everyone, we welcome your child – just as they are. We believe everyone has special gifts that should be developed, for their sake and for others.

At Grace, our students usually find it easy to make friends because of the many other young people with interests and values just like theirs.

You and your child will join a **diverse and inclusive** community; we encourage enrolment from a broad range of students and seek to support individual interests and needs. Our quality staff are selected for their teaching or professional excellence, character and grace.

As a Lutheran School we offer an accredited Christian Studies program which is biblically-based, academically rigorous, and reflective. It includes study of ethics, philosophy, and comparative religion.

We encourage thought; **ours is a thinking faith**. Through regular worship, devotions, and voluntary Christian youth groups, our students can question and express different ideas respectfully. Our large student Faith and Service Team initiates and leads activities and a highly regarded, systematic pastoral care, wellbeing and life skills program means we build sustainable and mutually respectful relationships with families.

At Grace our students learn about problems in their local community as well as the world beyond. We support them to take action to serve others who need our help and teach them that even a little can mean a lot. When a student feels cared for, they tend to become more caring and it is always inspiring to hear about past and current students who are making a real difference in the world.

Your child will come to understand that life takes on a whole new level of meaning and joy when they go beyond themselves. Hope is contagious – and Grace is a community of hope. We know that through faith in God and working together, we can play our part in changing things for the better.



A woman with dark hair tied back is shown in profile, looking down at a lit yellow candle she is holding. The scene is backlit by a large window, creating a warm, golden glow and a soft bokeh effect in the background. A large, white-outlined circle is positioned on the left side of the image, partially overlapping the woman and the candle. The word "GRACE." is written in white, uppercase, sans-serif font inside this circle.

GRACE.

Grace is a Christian community united by a belief in God's grace. We support our students to take action and serve others who need our help, teaching them that even a little can mean a lot.



GROWTH.



GRIT.





THE GRACE DIFFERENCE AT CABOOLTURE.

Caboolture Campus is a place where your child will be nurtured and respected. The close-knit campus offers a village community feel where all students are known by all staff.

Enrolling your child at Caboolture enables them to experience a Lutheran education from Prep to Year 12. Students can commence at St Paul's Primary School right next door and transition seamlessly to Caboolture in Year 7.

Brand new, air conditioned, facilities have been designed with the learner in mind and combine contemporary building principles with the latest trends in flexible educational spaces incorporating a range of learning technologies.

A broad range of co-curricular activities and subject choices are offered including all university pre-requisites and vocational options. These are enhanced by Science and Computer Laboratories and elective areas with specialist facilities for Art, Lifestyle Technology and Industrial Technology. A dedicated Dance and Drama Studio, equipped with the latest in digital lighting technology, supports our excellent Performing Arts program.

Other facilities include:

- 2 full size ovals;
- 3 science laboratories;
- 3 creative art centres;
- 3 integrated computer labs;
- a technology workshop;
- a drama studio/theatrette;
- 3 music suites;
- A college-issued Kickstart laptop program for all commencing Middle School students;
- A food and hospitality centre with operational kitchen for catering functions;
- A counselling/student advisor centre
- Supervised tutoring and support until 5:15pm Monday to Thursday;
- Multi-functional special education/student services;
- A CAVE (Centre for Academic and Vocational Excellence) incorporating a Resource Centre and access to Careers and Vocational Education and Training guidance; and
- An Outdoor Education Centre with four week attendance.

In certain circumstances, students at both campuses also have access to specialist subjects and other opportunities at the other campus.





SUPPORT.

A Grace distinctive is our out-of-school hours supervised study, homework help and tuition service four afternoons per week in the library and Senior Studies Centres.

A young woman with blonde hair in a braid, wearing black-rimmed glasses and a black shirt, is playing a violin. She is looking slightly to the side with a focused expression. The background is a dark, vertically pleated curtain. A bright green diagonal band cuts across the bottom of the image, containing the word 'GIFT.' in a white circle and a paragraph of text in a white script font.

GIFT.

*...an educational experience for your child that is
not just good, not just better, but the best it can possibly
be for them and your family.*

A GIFT FOR LIFE.

Choosing a school for your child is one of the most important decisions a parent will undertake. We appreciate the investment you are making and strive to deliver an educational experience for your child that is not just good, not just better, but the best it can possibly be for them and your family.

As a school of choice for teachers we are able to attract and retain the best and this is reflected in a strong academic focus where over 80% of Grace students study subjects that lead to university.

Our school is a leader in **Science, Technology, Engineering, Mathematics, Robotics, and Astronomy**. We have a culture grounded in intellectual rigour, student engagement and teacher quality. Academic enrichment extends to debating, chess, special competitions, excursions/incursions, guest speakers and online opportunities.

Students can be broadening their interests and learning at Grace until the early evening. A Grace distinctive is our **out-of-school hours supervised study, homework help and tuition service four afternoons per week** in the Library and Senior Studies Centre. This helps to make life easier for working parents and for siblings who are involved in different co-curricular activities.

An excellent careers education and advice program places an emphasis on students following the pathway that is best for them. Grace has a comprehensive **Vocational Education Training (VET) program** that includes options such as school-based traineeships, access for students at both campuses to the Trades Skills Centre at Rothwell (a state-of-the-art facility for construction, furnishing and engineering subjects) along with industry partnerships, and certificate courses on and off-site.

Our students are employees of choice in local businesses and for students who aspire to follow a vocational pathway we provide a wide range of subject offerings, school-based traineeships, apprenticeships and university courses. Grace students can choose a VET pathway to get a head start on a trade. A VET pathway offers points towards a Queensland Certificate of Education (QCE), nationally recognised qualifications and trades, and the option to enter University via a Certificate III, IV or Diploma. Certificate courses taught on site at Grace are available in a diverse range of subject areas.

Learning isn't confined to the classroom – research shows that children are three times more likely to have positive outcomes with academic achievements, leadership, and behaviour if they participate in co-curricular activities.

We offer an **outstanding Sports program** including many co-curricular sports across both campuses such as rugby league, futsal, soccer, volleyball, beach volleyball, basketball, touch football, water polo, cricket, tennis, netball, softball, and Australian Rules, many teams and students achieve success at state and national level. The Grace Learn to Swim programs and first-class swimming squads all utilise our heated aquatic centre at the Rothwell Campus.

G.O.A.L.S is Grace's sporting excellence program for student athletes aiming to achieve a career in the world of professional sport. G.O.A.L.S creates a supportive learning environment for student athletes to develop physically, mentally, socially and technically and provides the best opportunities for students to reach their personal goals and potential.

The Grace Academy, provides an **exceptional Performing and Creative Arts program** including dance, music, choir and drama, and complements the Creative Industries offering of media, film, cinematic theatre production and art. The Academy is open to Grace students and also to the wider community through holiday programs, adult classes and festivals.



A photograph of a family of four sitting on a dark metal bench in a park-like setting. On the left, a man in a dark brown suit, white shirt, and dark tie, wearing a dark brown hat, is smiling and looking towards the children. Next to him is a young boy in a light blue short-sleeved shirt and dark shorts, also smiling. To his right is a young girl in a green and white plaid dress with a white collar, sitting with her hands clasped. On the far right is a woman in a white short-sleeved shirt and dark brown skirt, holding a light-colored straw hat and looking towards the children. The background shows trees and a grassy area. A large green diagonal shape covers the bottom half of the image, containing the text.

GRACE FAMILY.

*Everyone belongs at Grace...
We warmly welcome the active participation of our parents
and grandparents in assisting us to educate your children.*

TOGETHER, WE ARE GRACE.

Parents are free to choose either campus depending on their location and needs. The Grace Way - our ethos, standards, expectations and community - applies equally to both campuses.

There is an excellent education available for all sons and daughters in the Grace family through Lutheran Schools. Grace Lutheran College has strong connections with our **Lutheran Partner Primary Schools and Early Learning Centres:**

- St Paul's Lutheran Primary School and Early Learning Centre, Caboolture
- Living Faith Lutheran Primary School and Early Learning Centre, Murrumba Downs
- Grace Lutheran Primary School, Clontarf
- Living Faith Early Learning Centre, Petrie
- Grace Early Learning Centre, Redcliffe

When your family joins ours, the benefits include a consistent Christian ethos, friendships that continue across year levels, bus transportation connecting the College with our Partner Primary Schools and curriculum continuity. Students from our partner schools enjoy preferential enrolment at Grace Lutheran College and family loyalty fee concessions also apply.

The mentor program at Grace is known as 'GEL'. GEL stands for Grow, Empower and Learn – three attributes which are embedded into the College's values of Grit, Growth and Grace. The College strongly believes that the GEL program facilitated by a GEL mentor stands to benefit each student by:

- Providing a holistic education to all students through a proactive mentoring approach to support their needs
- Enhancing the pastoral care and curriculum support already offered to support each student holistically
- Developing quality relationships between students and mentor staff who act as advocates/'champions' for each child.

Both campuses offer an active Parents and Friends committee and all **parents are encouraged to participate**. Everyone belongs at Grace – students, parents, carers, grandparents, past students and staff. We warmly welcome parent and grandparent involvement in assisting us to educate your children.

Every day is open day at Grace and our extended community is always welcome to attend events such as Chapel services, Grandparents' Day, sporting events, musical showcases, and Grace Celebrates at the end of each year.

And when your child leaves Grace, they don't leave our family. They join a network of like-minded **Grace Alumni** who enjoy regular year group reunions and other opportunities to stay connected, no matter where they journey in life.

The Enrolments Coordinator is pleased to organise an individual and personalised tour at a time convenient to you.



TRAVEL.

GOING THE GRACE WAY.

With 16 bus routes servicing the Rothwell and Caboolture campuses, no matter where you live in the Moreton Bay region there is likely to be a Grace bus in your area.

Going the Grace way means the daily pick up and drop off is made easier. More importantly, our modern bus fleet is owned, operated and staffed by Grace Lutheran College for the use of College and feeder Lutheran Primary School students. Buses are fully equipped with seatbelts, air-conditioning and CCTV cameras giving our parents peace of mind that their child is safe and secure.

Buses to and from the Rothwell Campus

- Bracken Ridge, Shorncliffe, Sandgate, Brighton and Clontarf
- Bribie Island and Sandstone Point
- Caboolture, Morayfield and Burpengary East
- Dayboro and Frenchs Forest
- Eatons Hill and Warner
- Everton Park, Albany Creek, Aspley, Carseldine, Murrumba Downs, Griffin and Living Faith Primary
- Joyner, Kallangur and North Lakes
- Narangba, Dakabin and North Lakes
- North Lakes

- Newport and Clontarf
- Scarborough, Redcliffe and Clontarf

Buses to and from the Caboolture Campus

- Beachmere and Bribie Island
- Bellmere and Narangba
- Mt Mee, Dayboro, Ocean View and Delaneys Creek
- North Harbour, Burpengary, Morayfield and Caboolture
- Sandstone Point and Bribie Island

Information correct as of July 2019

Additionally, there are public school bus and train services available to students. The Redcliffe Peninsula Line provides regular train services to Rothwell Station, 800m from the Rothwell Campus. The Caboolture Station, two kilometres from the Caboolture Campus, provides regular travel for students from the north and south.

An extra service is also available for our feeder Lutheran Primary Schools to and from the Rothwell and Caboolture Campuses.





OUR VISION

Exceptional education, individual care, empowered for life.

STRATEGY STATEMENT

A Lutheran College offering exceptional quality and breadth in academics, vocational, co-curricular and personal development through innovative pathways and sustainable business practices.



GRIT.


GRIT MEANS PERSEVERANCE WITH ALL TASKS FROM THE MUNDANE TO THE VERY DIFFICULT. WHEN WE PRACTICE GRIT WE ATTEMPT NEW CHALLENGES AND COMPLETE ALL TASKS TO THE HIGHEST POSSIBLE STANDARD.

GROWTH.

GROWTH MEANS HAVING A GROWTH MINDSET, A PASSION FOR LEARNING AND IMPROVING ONESELF. WHEN WE PRACTICE A GROWTH MINDSET WE CONFIDENTLY TRY TO IMPROVE, AND TACKLE NEW CHALLENGES.

GRACE.

GRACE MEANS UNDESERVED GENEROSITY, FIRST RECEIVED FROM GOD, THEN FREELY GIVEN TO OTHERS. WHEN WE PRACTICE GRACE WE HONOUR AND ACCEPT OTHERS.







GRACE
LUTHERAN
COLLEGE
EST. 1978

Rothwell Campus

Anzac Avenue Rothwell QLD 4022
PO Box 3181 Clontarf DC QLD 4019
Phone 07 3203 0066
grace@glc.qld.edu.au
glc.qld.edu.au

Caboolture Campus

129 Toohey Street Caboolture QLD 4510
PO Box 1424 Caboolture QLD 4510
Phone 07 5495 2444
enquiries_cc@glc.qld.edu.au
glc.qld.edu.au