

## WELCOME . . . . .

Welcome to Penrith Anglican College (PAC). PAC is a co-educational day school from Kindergarten to Year 12. PAC is committed to academic excellence and growth in Christian values. Parents and students need not be Anglican, however they must be supportive of PAC's Christian philosophy and principles.

PAC is owned by the Sydney Anglican Schools' Corporation, and local operational policy is vested in a Board of Governors. Daily operational matters, including staffing, enrolments and the various educational programs are the responsibility of the Headmaster.



## PAC AIMS

PAC encourages students to accept Christianity as the spiritual and moral basis of life and to come to a personal faith in Jesus Christ. We aim to nurture students so that they are able to accept responsibility, demonstrate commitment and personal initiative, become self-disciplined and show sensitivity to the needs of others.

PAC aims to stimulate in students intellectual curiosity, the capacity to tackle problems, the ability to think both creatively and logically and the ability to work co-operatively.

PAC provides an imaginative, purposeful, caring and enjoyable learning environment, enabling students to progress in accordance with their individual needs and abilities.



PENRITH ANGLICAN COLLEGE



## ENQUIRIES

All enquiries should be directed to:

The Registrar  
Penrith Anglican College  
PO Box 636  
Kingswood NSW 2747

Phone: (02) 4736 8100  
Fax: (02) 4736 8300  
Email: [registrar@pac.nsw.edu.au](mailto:registrar@pac.nsw.edu.au)

For further information, please visit our website:  
[www.pac.nsw.edu.au](http://www.pac.nsw.edu.au)

P R O S P E C T U S





## CURRICULUM

PAC offers a Christian perspective to all teaching programs within the context of the New South Wales Board of Studies curricula. Appropriate educational programs in all key learning areas from kindergarten to H.S.C are provided.

Students in Years 11 and 12 undertake either the International Baccalaureate Diploma program or the Higher School Certificate program.

PAC places particular emphasis on the acquisition of literacy and numeracy skills by all students. Students are taught in ability based groups for literacy and numeracy work from Kindergarten to Year 12.

There are two classes in Pre-K, three classes in each year from Kindergarten to Year 6 and four classes in each of Years 7-12.

As a general rule class sizes are as follows:

• Pre-K	20
• Kindergarten	26
• Years 1 – 2	28
• Years 3 – 10	30
• Years 11 - 12	24

PAC endeavours to foster in all students an appreciation of the creative arts. Consequently Music and Visual Arts are taught to all students from Kindergarten to Year 8. All students in Years 3 – 6 learn a musical instrument as part of the Music program offered.

Students may apply for Academic and Music Scholarships for entry to PAC in Years 7 and 11.

We are a member of the N.A.S.S.A (New Anglican Schools' Sporting Association) and P.S.S.A (Primary Schools' Sporting Association). Students are given the opportunity to represent PAC in a number of team sports, swimming, athletics and cross-country. As well, each student from Kindergarten to Year 10 participates in regular physical education lessons.

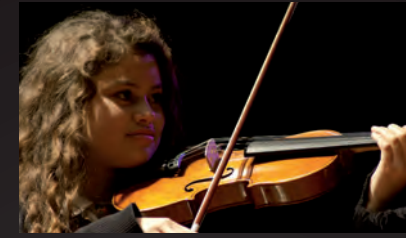
## INTERNATIONAL BACCALAUREATE DIPLOMA PROGRAM (IB)

PAC students are part of the global community connected through culture, economics, politics, technology and shared environmental concerns. As a result PAC is committed to fostering international understanding amongst its students, that is why we offer the IB Diploma as an alternative university entrance course to students in Years 11 and 12. The IB Diploma encourages students across the world to become active, compassionate and lifelong learners who understand that other people, with their differences, can also be right.

The IB requires that a student takes six subjects as well as completing three compulsory components – the Theory of Knowledge, the Extended Essay and Creativity, Action and Service. IB learners strive to be:

- inquirers
- thinkers
- principled
- caring
- balanced
- knowledgeable
- communicators
- open-minded
- risk-takers
- reflective

Students considering the IB Diploma must be prepared to study a second language, continue with studies in Mathematics, Science and the Humanities to a Year 12 level. They must also be willing to conduct some out-of-hours work.



## CO-CURRICULAR ACTIVITIES

These activities include the Duke of Edinburgh program, the Tabitha program, dancing, debating, choir, public speaking, Tournaments of Minds, a number of bands and ensembles and PACED (gift and talented program). They also have the opportunity to learn a musical instrument with outstanding local music teachers who operate here at PAC.

## CHRISTIAN VALUES AND PASTORAL CARE

At PAC we endeavour to model the Christian faith and students are encouraged to adopt Christian values. All students attend weekly Chapel services and are involved in our Divinity program. PAC emphasises care for each student and the development of each student's God given talents. Pastoral care groups meet each week in the Senior School. All students in Years 11 and 12 take part in the Tabitha program.

PAC teaches that there are absolutes in life, that there is right and wrong, true and false, and that there are consequences for decisions that are made. We require conformity to the highest possible standards of courtesy, public behaviour and uniform.

Corporal punishment is not administered at PAC.

## TABITHA PROGRAM

The Tabitha Program was developed by PAC to encourage the development of active, caring and skilled people who, as a way of life, think of and service others. The program is a two-year program for HSC students in Years 11 and 12. The program requires students to complete:

- 2 service electives
- 1 personal development elective
- 1 action elective and
- 2 free choice electives

These electives are divided into three categories:

- **Action** – physical activities
- **Personal Development** – learning and gaining a skill
- **Service** – serving others in the community

At the completion of the program, students are awarded their Tabitha Diploma. Students who continue to serve outside of school have the opportunity to receive a Tabitha Diploma with Honours.

It is hoped that the Tabitha Program will be a life changing program motivated by the College's motto "To Serve Christ".

## SETTING

PAC occupies 18 hectares on one of the highest hills in Penrith. It has magnificent views across the city to the Blue Mountains. The building design places special emphasis upon care of the environment. Many of the classrooms are of earth shelter construction, similar to Parliament House in Canberra. All classrooms are air-conditioned.

Spacious classrooms are grouped around a large common "learning centre", where students can access our "cutting edge" computer network and other library resources. There are discrete libraries within the learning centres: each has been set up to cater for specific age groups from Kindergarten to Year 12. This allows for flexible learning approaches to be used to prepare students in this new millennium.

PAC has a 600-seat theatre, gymnasium, an oval, three basketball courts, four cricket nets, play equipment and generous landscaping to enhance our buildings and beautiful location.

Our Preparatory (K-2) students have their own designated playground, consisting of a shaded seating area, oval and play equipment.



## PARENT INVOLVEMENT AFTER SCHOOL CARE

Parents can be involved in many ways in the life of PAC. We are fortunate in having a committed and enthusiastic parent body. We have a Parents' and Friends' Association, which encourages networking among parents and also raises funds for the College.

## CANTEEN

The canteen provides healthy lunches, drinks and snacks at a low cost. Its is open five days a week.

## UNIFORM

Students at Penrith Anglican College wear their distinct uniform with pride. The uniform code of PAC is adhered to very strictly.

A copy of the uniform requirements is available on our website.

## FEES

A fee schedule is available on our website, or from the Registrar.

## AFTER SCHOOL CARE

PAC staff supervise all students until 3.45pm. Students can then attend After School Care, which operates between 3.45pm and 6.00pm. A charge is levied for After School Care.

## TRANSPORT

PAC currently has bus services from:

Blaxland	Mount Riverview
Cranebrook	Mulgoa
Emu Heights	Orchard Hills
Emu Plains	Silverdale
Erskine Park	Springwood
Glenbrook	St Marys
Glenmore Park	Wallacia
Kingswood	Warragamba
Lapstone	Werrington
Leony	

Traffic arrangements ensure that children alight safely from buses and cars within the school grounds.

## SCHOOL TIMES

Pre – K	9.00am – 3.00pm
Kindergarten	9.00am – 3.00pm (Term 1) 9.00am – 3.15pm (Term 2-4)
Years 1 – 6	8.30am – 3.15pm
Years 7 – 12	8.30am – 3.30pm



**PAC Mission Statement:**  
To educate students to become informed and responsible global citizens who follow Christ and serve others.

Where giftedness is nourished.

