

## Welcome to Russell Lea Infants' School

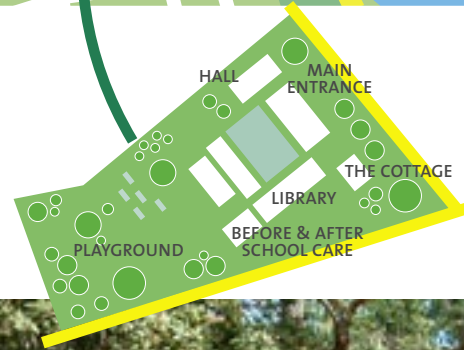


We would like to invite you to visit us and see our school in operation. Our 'open door' policy is to encourage interested parents to tour the school, observe our students at work, ask questions and introduce their children to our unique 'big school'.

*Mrs Lesley Pike*  
Principal



## Where to find us



## RUSSELL LEA INFANTS' SCHOOL

### Enquiries

Lithgow Street  
Russell Lea NSW 2046  
Phone: 9713 8267 / Fax: 9713 4673  
[russelllea-p.school@det.nsw.edu.au](mailto:russelllea-p.school@det.nsw.edu.au)



## RUSSELL LEA INFANTS' SCHOOL

Quality Education for the Future



Specialists in Early Childhood Education

Kindergarten to Year 2

## Excellence in Early Childhood Education

### *Our School Purpose*

- Our purpose is to encourage our students to be responsible for their own learning and to become independent learners with high self-esteem.
- Our programs help to develop our students' skills in communicating and decision-making.
- Learning experiences are provided to enable our students to become well-rounded people who reach their potential in all areas.
- We expect all our students to establish patterns of learning that will prepare them for future life.
- We encourage our students to be co-operative and caring individuals with a sense of responsibility to themselves, to others and to the environment.



Our teachers are experienced, nurturing & professional early childhood educators

### *Our Teaching & Learning Programs*

- The commitment of all of our teachers to our three-year teaching program has ensured success, consistency and continuity.
- Our aim is to make the beginning years of each student's education enjoyable, exciting, challenging and rewarding. Programs cater for the needs of all learners. There is a strong emphasis on literacy and numeracy, connecting outcomes across all the key learning areas.
- Gifted and Talented extension and enrichment programs exist in every class.

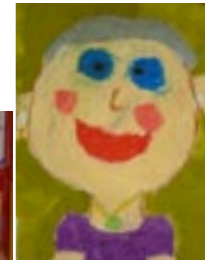


### *Our Unique School*

- Russell Lea Infants' School is situated in a uniquely beautiful environment amongst trees and native gardens.
- The main school building is on Lithgow Street in Russell Lea. (Lithgow Street is near the intersection of Brent Street and Lyons Road.)
- It is an intimate, peaceful location away from the hustle and bustle of any major roads.
- Our extensive grounds enable our students to play and grow promoting fitness and healthy lifestyles.
- Our location is easily accessible by car.

### *Before & After School Care On-Site*

- A modern, out of school hours centre in the grounds of the school provides a variety of programs as well as vacation care.



- Our whole school community is committed to the philosophy that young students learn best in a nurturing, supportive and caring environment with teachers who specialise in early childhood education.
- Russell Lea Infants' School prides itself on providing a comprehensive education for 4 to 8 year olds, enabling students to develop a positive attitude to learning.
- Our 'transition to primary school' program prepares our students to face the challenges of our changing world. It gives them the confidence to be able to achieve well in new environments and continue to be successful learners.
- Our Men in Early Childhood program enables students to participate in a variety of learning experiences.



- Computer skills are taught from Kindergarten through to Year 2 – keyboard skills, publishing, researching and emailing. All computers in our classrooms are connected to the Internet.
- Russell Lea has a state-of-the-art library with extensive resources. We have 100% participation by all students in the NSW Premier's Reading Challenge.
- We utilise our vast grounds for our physical education programs such as gymnastics, aerobics, athletics, skipping, team sports and basic physical skills. All Year 2 students compete in the annual chess tournament.
- Our music programs encompass singing, movement, recorder, percussion, dance and music appreciation.