

Glenaeon Prospectus

Unfolding Individual Journeys



Glenaeon
Rudolf Steiner School



Welcome From Head Of School



It is a pleasure to invite you to explore our school through our prospectus.

Glenaeon Rudolf Steiner School is an academically challenging, emotionally fulfilling, and culturally enriching school where teachers educate to the highest standard and support students on their journey to a successful future. We are very proud of Glenaeon's history, current practice and unique vision for the future.

Glenaeon was founded in 1957 by Sylvia Brose OAM, out of the community around Walter Burley Griffin and Marion Mahony Griffin. Their enduring values of academic scholarship infused with design, the arts, community, nature and spirit were ahead of their time. From this foundation, Glenaeon pioneered innovative teaching and learning in Sydney, and we are indeed proud of the contribution our school has made to contemporary education.

Today, as an educational community from Preschool to Year 12 with 500 students, our school is able to foster a strong sense of connection while getting to know our students individually as their journey unfolds. Glenaeon students are educated to a very high standard and are given opportunities to find out who they are, in order to add something of value to the great human story.

To all our students we offer two of life's most precious gifts, hope and wellbeing: hope, so they can contribute meaningfully to the world story, and wellbeing, that they will be healthy, whole and skilled enough to do so. Our task as a school is to give them the rich and nourishing environment that will inspire them, in a challenging but connected world, to be their unique and individual best.

I look forward to welcoming you to Glenaeon.

ANDREW HILL

B.A. (Hons) Dip Arts, M.Ed (Sydney) MACE

Head of School

"From kindergarten to Year 12,
Glenaeon Rudolf Steiner School has given my sons a
rich, creative and abiding education
across all subject areas. It has embedded in them
a love of learning, and helped to develop them into
well rounded, compassionate young people
ready to contribute to our modern world."
Year 10 parent

Our School

Glenaeon Rudolf Steiner School is an independent, co-educational school catering for children from Preschool through to Year 12.

We invite you to explore our unique education at one of our three campuses near Chatswood, on Sydney's lower north shore.

- Our main campus at Middle Cove is located on three hectares of beautiful bushland grounds reaching down to Scotts Creek and Middle Harbour.
- Our Kindergarten and Class 1 and 2 are situated on a quiet, tree-lined campus at Castlecrag, with a beautiful playground and the Marion Mahony Griffin Hall.





Introducing a Glенаeon Education

Glенаeon's curriculum and pedagogy is a seamless blend of the local Board of Studies of NSW (BOSTES) requirements with the educational insights of Austrian-born philosopher, scientist, artist and educator Rudolf Steiner (1861-1925). There are now more than 1000 Steiner schools in 61 different countries worldwide and over 40 Steiner schools in Australia, with a growing number of Steiner streams integrated into public schools.

Steiner education observes that we move through a series of stages in our cognitive and emotional development as we grow up. Our adult rational understanding is built on a series of steps which unfold in the life of every child:

- A Preschool child learns actively, with their whole body and through imitation.
- A child from the ages of about six to early adolescence learns best by forming a strong feeling and imaginative connection to the content presented.
- An adolescent begins to build a future intellectual life through questioning, testing and finally, analysing and comparing. These activities require self-reflection and critical observation rather than simple immersion, and our senior school work builds these adult skills.

Glенаeon therefore strives to develop the physical, emotional and intellectual capabilities of the developing child through an age-appropriate curriculum that integrates the study of the humanities, science, mathematics and technology into the disciplines of movement, fine arts and practical arts, allowing our students to receive a well-rounded and holistic education.

Five Foundations of a Glenaeon Education

At Glenaeon, the following five foundational programs interweave throughout each student's educational journey:

Academic

A rigorous education takes the growing child through a broad and inspiring range of subjects, meets all the requirements of the Board of Studies, and produces excellent results in the HSC. A non-selective school, we are consistently within the top 20% of high schools in NSW in HSC results, and over 90% of our students continue on into tertiary studies.

Aesthetic

A rich program of creative and performing arts for all students in Art, Music, Drama and Eurythmy. Each year, Years 1 to 7 perform a play, culminating in a production of Shakespeare in Year 8. In Year 10, an entire musical is performed. Drawing, painting, singing and instrumental classes are part of the weekly program for all our students.

Each child is seen as an artist and an individual with creative ability. As adults, they can use these capacities to awaken new ideas, new solutions, new modes of thought and consciousness.

Artisan

All students learn a range of meaningful adult crafts beginning with the soft material of textiles and growing into the "harder" materials of wood, metal, stone and glass by Year 8 and 9. Our Artisan program grounds students in the realities of materials, and builds the entrepreneurial skills of design, planning, implementation and review. On a personal level students learn confidence and creativity from making useful and beautiful objects.

Active Wilderness

Glenaeon builds resilience through healthy outdoor activities in an age-appropriate sequence

- A sophisticated outdoor education program taking students on experiences from a local setting to adventures across Australia, and offering the Duke of Edinburgh Award
- A range of curricular and co-curricular sporting activities ensures all students are supported in their physical and emotional development

Altruistic

A Glenaeon education is based on relationships: each classroom is a learning community where respect and empathy for others are constantly built and nourished. Personal responsibility is a cornerstone of school practice which underlies our management of student conduct, and guides our interpersonal ethics. Social Justice initiatives through the school foster an ethic of living for others.





"Our children have all looked back on their Steiner education with great fondness and gratitude. Glenaeon has given them a holistic understanding of our world, the ability to think for themselves in any situation and a wonderful community of friends for life."

Former parent

School Philosophy - Values

Glenaeon educates students for wellbeing, ensuring they will enjoy a fulfilling, healthy childhood and an active, purposeful adolescence that prepares them to find their path in life. We value rich academic development imbued with imagination, the arts and artisan learning. We deliver a Middle and Senior School program that is intellectually challenging and creatively inspiring. At all times we educate for academic growth that is in balance with emotional wholeness, spiritual purpose and physical health.

Our values take their foundation from traditional sources in a 21st century context:

Our school values :

- the foundation that a **healthy childhood** gives to a successful life. We support the need for children to play, be part of nature and to enjoy a time free from the stresses of the early commercialisation of childhood. We also value the developmental picture of human consciousness that has evolved through the ages of history.
- a **uniquely balanced education** for every child, fostering the development of clear thinking, rich emotions and a strong will delivered through a high quality academic program, a flourishing creative and performing arts experience, and practical training in traditional and contemporary technologies for every student.
- an **international** understanding and tolerance of diversity.
- **compassion** and collaboration over competition, as the basis for both individual achievement and social harmony. We strive to make every classroom a learning community.
- **the uniqueness of each individual student**, recognising that each one is on a path of biographical development unfolding his or her sacred self.
- **sustainability**. Dr Steiner was a pioneer of Biodynamic agricultural practice in the early 20th Century. We continue this tradition through working in harmony with the natural environment in a creative, constructive manner.
- the "**wisdom of humanity**", handed down through the great world religions and traditions. We work creatively to nourish and support students, teachers and parents in contemporary expressions of spirituality and ethics.

" The very young, preschool age child comes to know the world and others through physical and sensory activity.

This is an immediate participative way of knowing, by which the child through physical activity and above all through imitation, emulation and play, comes to know and make the world its own."

Rudolf Steiner

Early Childhood Program

PRESCHOOL - A Home Away from Home

Our Preschool caters for children between 3-5 years old and is a place that emulates a warm and stable home environment, where teachers support the children with a nourishing and gentle program.

Because young children learn primarily through creative play and rhythmic activities, the preschool provides many indoor and outdoor activities which allow them to develop the confidence, independence and security necessary for their journey through school and life.

KINDERGARTEN

Glenaeon Kindergarten comprises 'Little Kindergarten', a part-time program that runs on Monday, Tuesday and Wednesday, and two Kindergartens that run on Monday, Tuesday, half-day Wednesday, Thursday and Friday.

Little Kindy

In our 'Little Kindy' the group sizes are small enabling teachers and children to forge a close relationship. Our Little Kindy program is an excellent stepping stone in the year prior to children starting school. The children must turn 5 by August in the year they commence.

Kindergarten

In this natural, loving and creative environment the children learn through 'playing and doing'. The child's day is filled with a range of diverse activities: creative play, sewing, beeswax modeling, drawing, baking, painting, music, stories, puppet shows, gardening and building. Regular bush-walks introduce the riches of nature to the children.

Literacy and numeracy skills are grounded in a rich experience of oral and practical learning experiences. Pre-numeracy skills are practiced through sorting, sharing, naming, building and arranging the natural materials in the classroom and playground. Literacy and a love of language is built through speech, drama, story telling and song.



"Happy, fulfilled, and wonderfully engaged in learning...
my child has flourished at Glenaeon."

Year 4 parent

Primary Years 1 - 6

Creativity embedded in an explicit learning framework

The Main Lesson

The primary school day begins with the Main Lesson, a two-hour period focused on one topic area for three weeks. The Main Lesson is a unique element in Steiner education and it is during this uninterrupted time, that the class teacher presents the current academic subject artistically, descriptively and dramatically. The central theme of the Main Lessons is explored through a range of integrated activities - movement, speech, music, story, practical activities and formal academic work. Each Main Lesson is linked to others across the same year and also provides a springboard for others in subsequent years. The children create their own Main Lesson books, reflecting their work in words, pictures, charts and diagrams.

The Class Teacher

Through the primary years, each class group is taught by one of our specially trained, multi-disciplinary educators. The Class Teacher guides a class through the primary years as guardian and mentor, creating an intellectually and emotionally healthy space, balancing challenge with reassurance. They present the main lesson and coordinate additional input from special subject instructors. This method is a common feature of education in Scandinavian countries which rate among the highest performing of OECD education systems.

Curriculum Overview

In the early primary years, a deep introduction to literacy, numeracy, history and science is made by immersing each student in the rich and imaginative world of story, poetry and song. Fairy tales, stories from around the world, the natural environment and the Dreamtime form a part of the child's daily experience in the early grades.

This approach of thematic studies, an integrated curriculum, and an immersion in aural and visual beauty, cultivates in each child a strong inner imaginative capacity. The capacity of imagination - a very powerful cognitive tool - will form the foundation for future creativity, problem-solving and innovation in adult life.

The Arts

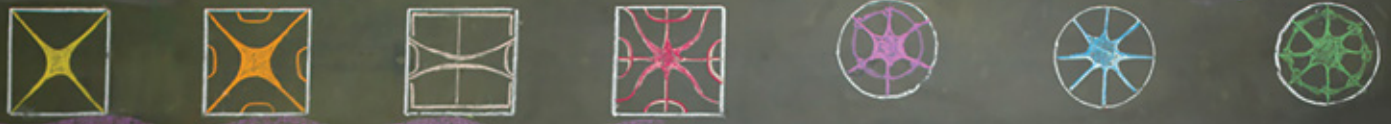
Creativity is further nurtured and supported through the study of the arts. All students take part in weekly drawing and painting classes as well as singing and instrumental music tuition. This emphasis on working artistically results in creative thinking individuals with the capacity for self-expression and flexible thinking.

Years 1-6 perform an annual play, and all students benefit from the skills imbued in theatre: public speaking, team work, the emotional intelligence of playing someone else. Music also occupies a key role in the curriculum and all students play a range of instruments from Year 3.

Languages

Glenaeon fosters a global awareness through the curriculum by ensuring all students learn a language other than English through to Year 10. We teach two languages from Year 1: a European language (German) and an Asian language (Japanese), reflecting our heritage and our geographical location.

Tuesday 28th October. Main lesson. Recess. English Music. Lunch. Maths.



The History of Magnets

Around 4000 years ago in Ancient Greece a shepherd named Magnes was tending his flock when something mysterious happened. The iron nails in his sandals and the tip of his staff stuck to the ground. When he dug down he discovered a black rock attracting the metal. This rock became known as Magnetite. Many cultures around the world knew of the qualities of magnetite

and it was thought to have magical powers, cure illnesses and drive away evil spirits.

They had a variety of black rocks in a bowl.



"We were determined to find a school that would offer our girls a strong academic education as well as value and promote their social and emotional growth. Glenaeon is the perfect blend and balance of the two. The enriched learning environment coupled with a rigorous academic program offers our children the opportunity to grow and learn in a supported and nurturing way allowing them to develop self-discipline, self-awareness and self-confidence along the way"

Year 7 parent

Middle School - Years 7, 8 and 9

Pastoral Care: Guardians and Year Advisors

In Year 7 a Guardian and a Year Advisor are appointed, both of whom work closely with the students, teaching the majority of Main Lessons. They are the bridge between the Class Teacher years and the high school, where students are taught by a range of teachers with specialist qualifications in their subjects. Guardians provide pastoral care and work closely with students and families, while Year Advisors manage the academic program of the year level.

Curriculum

Our Middle and Senior School offers a broad and balanced program combining the twin pathways that complete the Glenaeon Learning Journey. The curriculum of the middle and high school years is a two tier program:

- a NSW syllabus that meets our local Board of Studies requirements leading to the award of the HSC and prepares students with their highest possible results for university or other tertiary education entry;
- an international curriculum based on the work of Dr Rudolf Steiner and preparing students physically, emotionally, intellectually and spiritually for the challenges of life in in the twenty-first century global world.

Students complete all mandatory hours in each of the Key Learning Areas of all BOSTES syllabuses. Our Main Lessons in the Middle School are substantial topics that challenge all students and meet the needs of all learning styles.

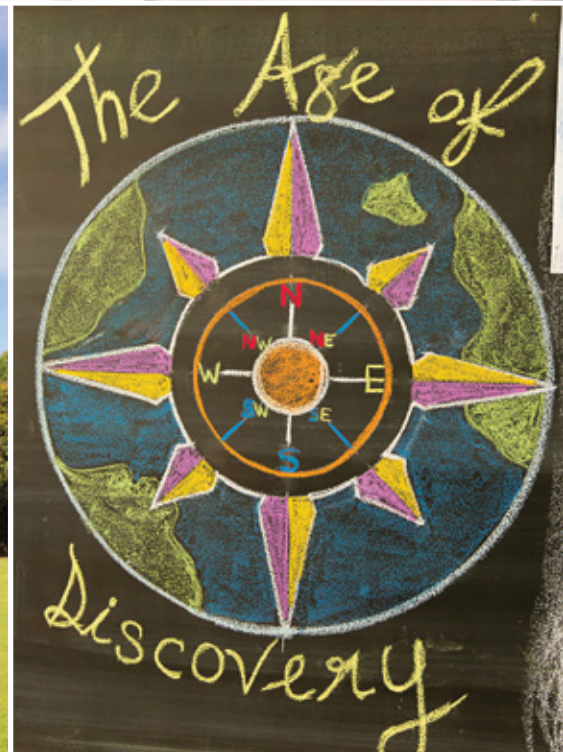
Learning is infused with an aesthetic that elicits a creative response from each student and builds design skills. Students represent their learning in a Main Lesson book that records their creative responses.

Electives:

In Years 9 and 10, students undertake a Major Elective from Music, Visual Arts or Design and Technology plus two Minor Electives that cover a range of creative options such as Jewellery, Digital Design, Textiles, Sculpture or Ceramics.

Musical Theatre

The Year 10 musical is selected while the students are in Year 9 and students begin working on the production from semester 2. In term 4, students begin intensive work on the show during the drama main lesson. The musical is an anticipated event in the calendar, and students look forward to exploring and developing the knowledge and skills which enable them to create a theatrical production of a high standard.



" Our task is to educate their (our students)
whole being so they can
face the future. We may not see the future,
but they will and our job is to
help them make something of it."
Sir Ken Robinson

Senior School - Years 10, 11 and 12

Students step into the Senior School in Year 10, continuing many aspects of the Year 9 program at a higher level, but now looking ahead to choices they will make when they enter the Preliminary and HSC courses in Years 11 & 12.

Our senior students also work toward their Glenaeon Senior Studies Certificate, a culmination of each student's participation in Years 11 and 12 in the HSC, and their achievements in our research, leadership and service programs.

HSC subjects offered include:

Ancient History	English (all courses)	Modern History
Biology	German	Music
Chemistry	History Extension	Physics
Drama	Japanese	Society and Culture
Design and Technology	Mathematics (all courses)	Visual Arts

We also offer a variety of other learning options through a flexible timetable: students can undertake any other subject, such as languages, via Open High School, Distance Education or through our local TAFE providers. Students can also undertake TVET courses leading to Certificate II or III qualifications in addition to HSC courses.

The Glenaeon Senior Studies Certificate

In addition to the HSC, we offer an enriched program of senior studies that builds a broad pathway into each student's future. Interdisciplinary Main Lessons continue to Year 11 and provide a broad synthesis of knowledge and intellectual development.

Research

All students complete a research project on a topic of their own choice. Projects may be integrated with the requirements of an HSC subject or undertaken as an independent project. The project gives the students the opportunity to explore an area of interest in a deep and independent way.

Leadership

All senior students have opportunities to mentor younger students and assist in taking responsibility for significant aspects of the school.

Service

Students complete guided social justice undertakings with disadvantaged people, currently with an aboriginal community in Central Australia.



"The Glenaeon Outdoor Program and its impact on our son
has greatly exceeded our expectations.
Thank you for providing a great developmental program."

Year 11 parent

Active Wilderness

Glenaeon provides a strong outdoor education program that fosters resilience, responsibility and self-reliance, and builds a healthy relationship with the natural world. Years 7, 8 and 9 students participate in a number of Active Wilderness camps which include kayaking, hiking, abseiling, mountain biking and rock climbing. We build skills in adventure activities that enable our students to complete major journey-based expeditions in the senior years.

We have a focus on hiking from Year 7 through to Year 11, as students in the high school complete expeditions to locations across Australia, currently ranging from north Queensland to Central Australia and Tasmania.

The aim of Glenaeon's Outdoor Education program is to change every student's expectation of a "school camp" from something regular to something unforgettable, sometimes even life-changing.

Duke Of Edinburgh Award

This Award is offered at the beginning of Year 9 with students able to enrol at the Bronze level. Completion of the award gives students a great sense of achievement and they are able to progress to the silver and gold awards which are valuable additions to their resume. Glenaeon's camps and activities support the students in the achievement of the Bronze award.

Personal Development, Health and Physical Education and Sport

From the beginning of their schooling in the primary years, students spend at least 80 minutes per week engaging in physical activity. In the high school, Glenaeon's PDHPE program continues, covering a variety of sports through weekly lessons both on and off site, aimed at building a broad skill base as well as skills in specific sports. Sailing, rock climbing, self-defence and surfing are just a few of the activities students enjoy. A co-curricular program offers a range of competitive sports outside school hours. Glenaeon teams play in local and interschool competitions which can lead to representative levels.





Community Foundation

Glenaeon Parents Association

All parents are members of the Glenaeon Parents & Friends Association which is an incorporated association. It exists to support the workings of the school so that the needs of the children may be met and the school community strengthened.

Glenaeon Foundation

The Glenaeon community has long benefited from a tradition of giving, with over 90% of the current school facilities enjoyed by our students, financed through extensive fundraising by parents, teachers and alumni. The Glenaeon community is grateful for all contributions that allow our school to be what it is today.

The Glenaeon Foundation was established in 2012 to assist the school in further developing its educational facilities and ensure we provide an outstanding Rudolf Steiner Education to all our students.

For further information visit www.glenaeon.nsw.edu.au/giving or contact our Director of Development on (02) 9932 2317 or email info@glenaeon.nsw.edu.au

" My time at Glenaeon fostered values which have been my main sources of strength. The values of silent reflection, mindfulness and perspective of what is truly important in life were introduced to me at a time when most my age were focused only on their HSC scores."

Former student

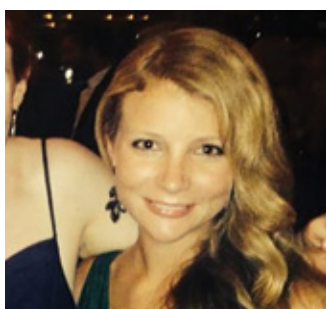
Alumni

The Community of GlenX

There is now a sizeable diaspora of Glenaeon students spread across the country, and the world, who have in one way or another shared in the Glenaeon spirit.

Classes have regular reunions and there is a camaraderie that lives on between those who have been comrades-in-arms in Glenaeon classrooms. A number of events over the past two years that have brought together former students, parents and teachers of the school.

The lives of our GlenXer's make inspiring reading, and can be read online at <http://glenaeoncommunity.com.au>. So many of their stories demonstrate that our education has equipped them with a range of skills, attitudes and work practices which have translated into a diversity of successful careers.



Mia Westcott

- Glenaeon K-12
- Bachelor of Medicine, Newcastle University
- Remote Medicine Placement, Solomon Islands
- Paediatric Registrar, Newcastle Hospital



Zac Cohan

- Glenaeon 1-12
- International Studies, Macquarie University
- Apple World Developers Award 2007
- Co-founder: Picturesque, Soulver
- Software designer



Lucy Minter

- Glenaeon K-12
- Trained as carpenter (Master Builders Association)
- Law degree at UNSW
- Organised building projects in disadvantaged areas of Brazil

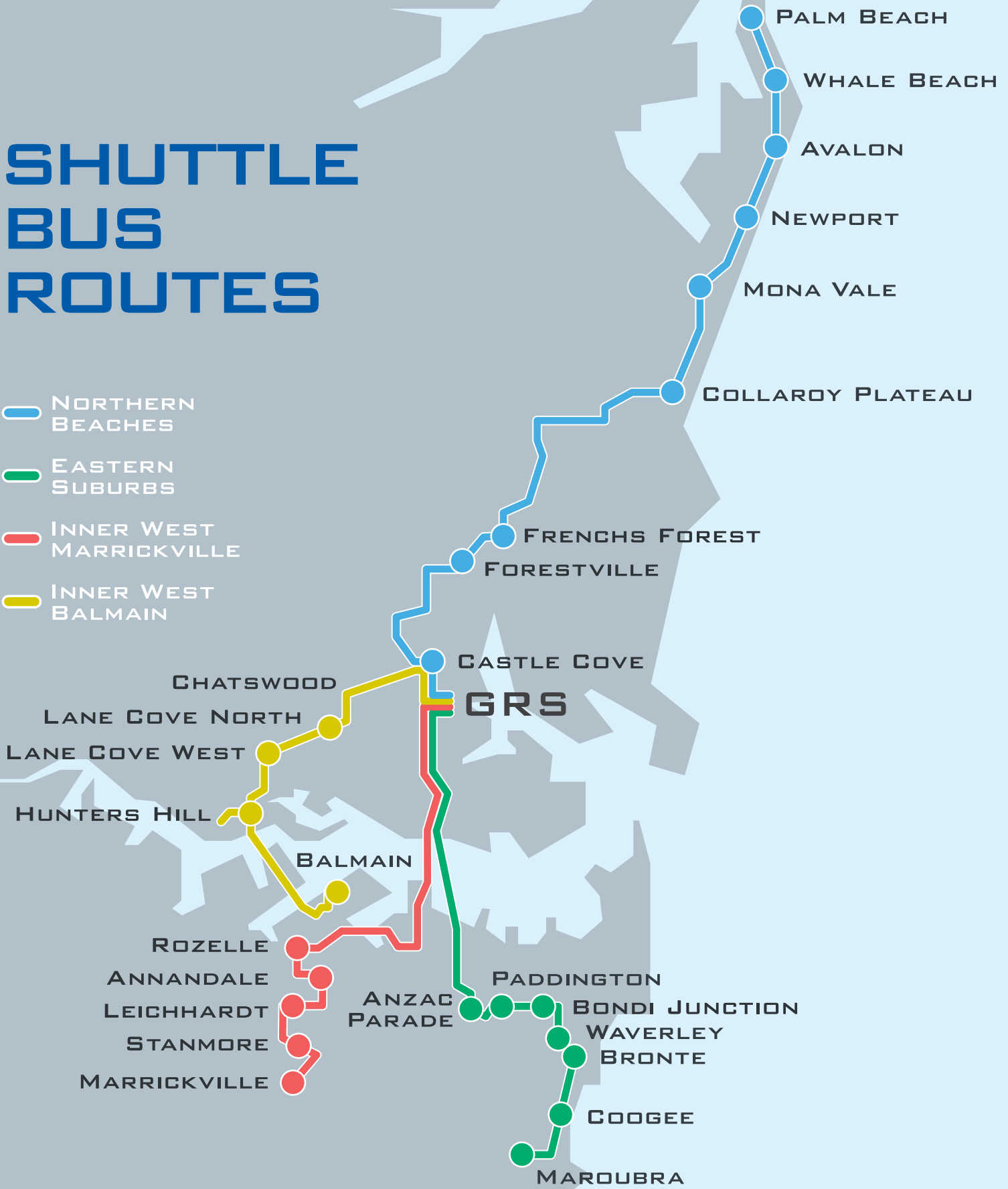


Paul Beasley

- Glenaeon K-12
- First Class Honours, Advanced Science, UNSW
- MBA, University of Texas
- M/A-COM Technology Solutions Boston

SHUTTLE BUS ROUTES

- NORTHERN BEACHES
- EASTERN SUBURBS
- INNER WEST MARRICKVILLE
- INNER WEST BALMAIN



Thinking about enrolling?

Visit our website - www.glenaeon.nsw.edu.au

Book a tour - To book a tour of one of our three campuses, contact our Enrolments Registrar or book online via our website

Contact our Enrolments Registrar -
on tel: +61 2 9932 2325
or via email enrolments@glenaeon.nsw.edu.au





Glenaeon
Rudolf Steiner School