



Equipped for Life

CORE PURPOSE STATEMENT
AND MISSION GOALS

CONTACT DETAILS

Green Point Christian College

382 Avoca Drive, Green Point NSW 2251

Postal Locked Bag 1, Kincumber NSW 2251

Office Hours are 8.30am to 4.00pm

Telephone 02 4363 1266

Email office@gpcc.nsw.edu.au

www.gpcc.nsw.edu.au



[GreenPointChristianCollege](https://www.facebook.com/GreenPointChristianCollege)



[greenpointchristiancollege](https://www.instagram.com/greenpointchristiancollege)



[school/green-point-christian-college](https://www.linkedin.com/school/green-point-christian-college)



FROM THE PRINCIPAL



WELCOME TO GREEN POINT CHRISTIAN COLLEGE

Established in 1982 to serve primarily the families of Green Point Baptist Church, the school has grown significantly to its present number of 1000 students across Kindergarten to Year 12. Over the decades the school has come to welcome any family who wishes to have their children educated by Christian teachers in a Christian educational community.

Our core purpose statement sets the course for our school and home partnership and directs all we do in school life. We are committed to shaping students in accordance with our graduate profile and directing our energies to helping them make a difference in the world. As we move forward into a new decade of service we do so with purpose and excitement as we help shape a generation.

Phillip Nash PRINCIPAL

A young girl with dark hair in a ponytail, wearing a white-collared, short-sleeved, checkered dress with a red bow, stands on a playground structure. She is smiling and holding onto a yellow handrail. In the background, another child is visible on a swing set, and the scene is set in a park with trees and a clear sky.

Equipped for Life

CORE PURPOSE STATEMENT

The purpose of Green Point Christian College is to equip students for a life of redemptive action through a holistic education grounded in a Biblical perspective.



MISSION GOALS

Our purpose will be achieved through mission goals focussed in three key areas.



1

STUDENTS

The formation of students who display the attributes of the Graduate Profile.



2

STAFF

The development of quality staff who serve our students well.

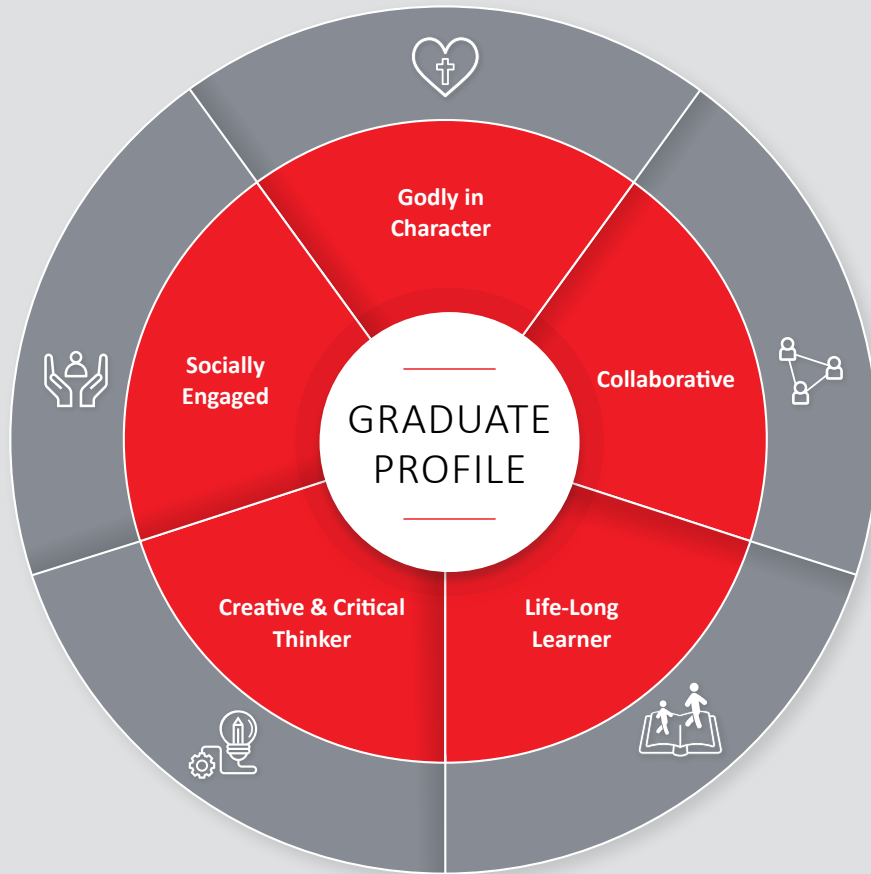


3

PARENTS

The support of families as the
cornerstone of a flourishing society.



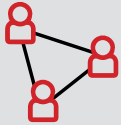




GODLY IN CHARACTER

We are designed in God's image
and fulfil our humanity most when
we reflect His characteristics.





COLLABORATIVE

We are designed for relationship and co-operation, and flourish when we work together with others.





LIFE-LONG LEARNER

We are designed for on-going
discovery of ourselves, others,
the world and the Creator.





CREATIVE & CRITICAL THINKER

We are designed as thinkers
and given responsibility to be
co-creators with the Great Creator.





SOCIALLY ENGAGED

We are designed to serve and
help others, and to redeem
the brokenness of the world.



www.gpcc.nsw.edu.au

