



Australian Christian College - Launceston **Annual Report 2024**



**AUSTRALIAN
CHRISTIAN COLLEGE**
LAUNCESTON

Principal's Report

It is a privilege to present this reflection on the achievements of 2024 at Australian Christian College – Launceston.

The theme of this year's report is **'More and More'** – a fitting summary of a year marked by continued growth across all areas of school life: in enrolments, academic achievement, student opportunities, and community connection.

This year, we celebrated our largest ever Year 10 graduating cohort, with ten students completing their studies at ACCL. Their reflections, captured in a dedicated two-page spread in our 2024 Yearbook, emphasised the unique strengths of our school community. Students spoke warmly of the close-knit friendships, the culture of mutual support, and the strong bonds formed with staff. It is clear that ACCL has played a significant role in shaping their educational and personal journeys. We are extremely proud of these students and look forward to seeing the 2025 Year 10 cohort rise to the high standard they have set.

Opportunities for students to engage beyond the classroom also expanded this year. The school introduced a dedicated camp experience for the Grade 7/8 cohort, complementing the now established Grade 9/10 camp. This year, our Grade 5/6 students experienced the Canberra Trip providing an opportunity to strengthen their leadership and community bonds. Our Student Representative and Support Team, supported by staff, have also enhanced an outward-looking focus, coordinating a number of community engagement initiatives throughout the year.

Academically, we continue to see positive results from our commitment to **Explicit Direct Instruction (EDI)** in the primary years. Most notably, our Grade 3

cohort achieved results significantly above the national average across all five NAPLAN domains: reading, writing, spelling, grammar and punctuation, and numeracy. In the secondary years, we have maintained an intentional focus on providing calm, settled, and purposeful learning environments. This is frequently remarked upon by visitors to the school, who comment on the exceptional level of student engagement and classroom atmosphere.

Reflecting this ongoing success, our enrolment numbers increased by 12% in 2024, just below the trend over the past seven years. We are excited that our current building project, which will deliver new classrooms, specialist facilities, and additional learning spaces, is on track for completion at the end of Term 1, 2025. I wish to thank all members of our community for their patience and flexibility during the construction process. These new facilities will further enhance the opportunities available to our students.

Finally, I wish to sincerely acknowledge our dedicated staff. Their professionalism, collegiality, and commitment to excellence are evident in every aspect of school life. It is rare to find a workplace so rich in laughter, collaboration, and mutual support. Our staff not only foster academic success but also attend to the social, emotional, physical, and spiritual development of our students. I also extend my gratitude to the families and partners of staff members, whose support underpins much of what we achieve together.

As we look to 2025, we do so with great optimism, anticipating even **more growth, more opportunities, and more success** as a school community.



A handwritten signature in black ink, appearing to read 'Marty Howell'.

Marty Howell

Student Cohort - On Campus (by the numbers)

Students	End 2023	End 2024	Increase/Decrease
Primary (inc Kinder)	59	52	-7
Secondary	25	34	+9
TOTAL	84	86	+2

Student Cohort - Distance Education (by the numbers)

Students	End 2023	End 2024	Increase/Decrease
Primary	11	18	+7
Secondary	16	21	+5
TOTAL	27	39	+12

Student Attendance (On-Campus Only)

Students	2023	2024	Increase/Decrease
Primary (inc Kinder)	91.9%	92.86%	+0.96%
Secondary	93.55%	90.91%	-2.64%
TOTAL	92.4%	92.14%	-0.26%



ACC Launceston Staff

Australian Christian College Launceston Teaching Staff List

Marty Howell (BEd - P)

Jennifer Howell (BA, BEd)

Marcela Hemphillova (MAGSci, GradDipTeach)

Jelly van Den Berg (BEd)

Angela Chapman (BEd - Secondary Music)

Mrs Lynda Armstrong (DipEd)

Ben Harwin (BHLthSc, MTeach)

Christelle Harwin (BEd - EC/P)

Mrs Bridgette Demarchi (GradDipEd - P, BAppSc - MedLabSc)

Mrs Anna Wolvaardt (BLaw, GradDipEd)

Mr Christopher Morrison (BA - Architecture, MTeach)

Mrs Felicity Carrett (BEd, GradCertVA, GradCert - Lead&Mgt)

Australian Christian College Launceston Administration Staff

Michelle Carins

Australian Christian College Launceston Learning Support Staff

Anne Viupe

Rachael Griffioen

Australian Christian College Launceston Cleaning Staff

Victoria Dickson

Staff Professional Development

Throughout 2024, staff were actively encouraged to engage in a variety of professional development opportunities to support their ongoing growth and effectiveness. In addition to the many in-house training sessions provided at ACCL, staff also participated in a range of programs offered by Independent Schools Tasmania, both online and in person. Below is a selection of the professional development activities undertaken by staff during the year:

- CEM Leadership Summit
- StepLab Certificate in Leadership
- TOSA Inc - Summer School
- TOSA Inc with Musica Viva In Schools
- Positive Partnerships
- Christian School's Launceston: Job-a-Like Sessions

Sport

Sport and physical activity continue to be an integral part of student life at ACCL, supporting the development of essential physical, mental, and social skills. In addition to regular Physical Education lessons, students actively participated in a wide range of local, interschool, and community sporting events. In our ongoing commitment to expanding opportunities, 2024 saw the introduction of the inaugural ACCL Mini-Swimming Carnival, providing another exciting avenue for student engagement and growth. Some of the key highlights from the year include:

- ACCL Mini-Sports Carnival
- ACCL Mini-Swimming Carnival
- Swimming and Water Safety Program (2 weeks)
- Northern Christian Schools Cross-Country
- Northern Christian Schools Futsal Championship
- NIJSSA 5/6 Sport (Semester 1)
- National HPE Day

Excursions, Incursions and Camps

There was once again a wide range of events, excursions, and incursions that enriched student learning across multiple areas. These experiences play a crucial role in supporting the development of independence, confidence, teamwork, and real-world understanding beyond the classroom. Notably, our Grade 5/6 students embarked on the Canberra Trip, deepening their knowledge of Australian history and government, while our Grade 9/10 students attended their camp at Blue Lagoon, building leadership skills, resilience, and connection with peers. Throughout the year, students also participated in a variety of other activities designed to complement and enhance their learning, including:

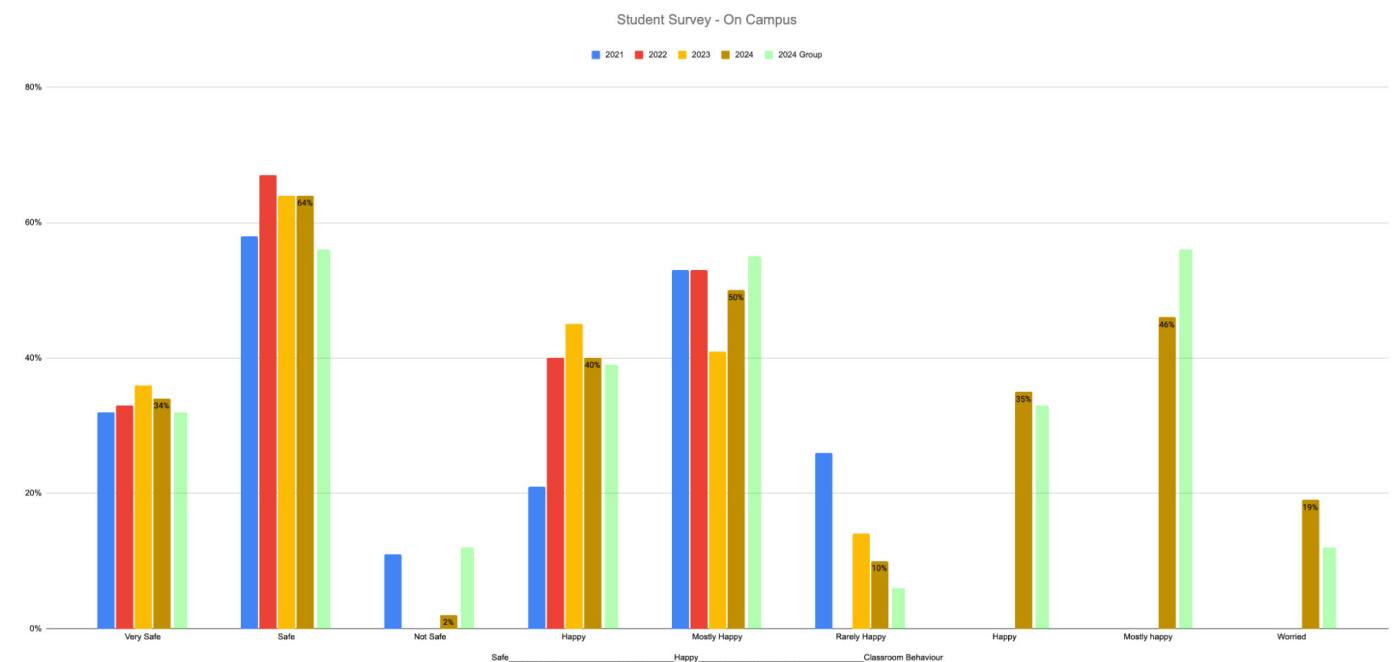
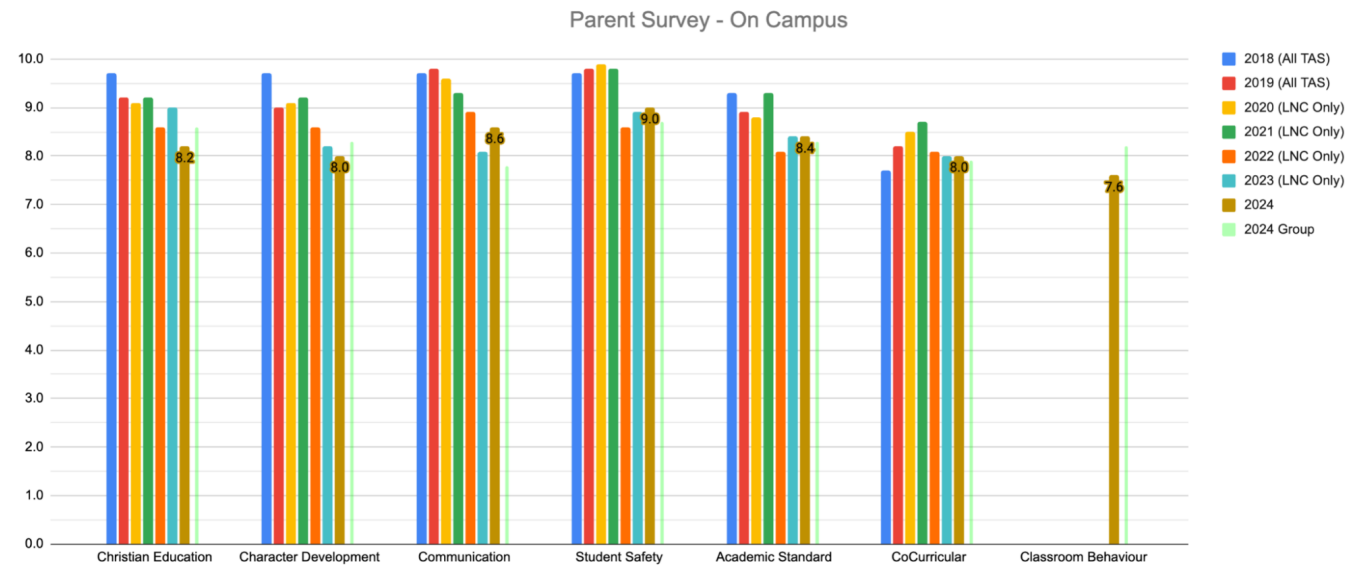
- K-2 Bravehearts Program
- K-6 School Fire Education Program
- 5-6 New Horizons Tasmania - Community Service
- 7-10 Salvation Army - Community Service
- 9-10 Camp (Blue Lagoon - Hobart)
- 1-4 Launceston Competitions
- 5/6 Canberra Trip
- Clean up Australia Day
- K-2 Hagley Farm
- 3/4 QVMAG
- 7/8 Civics Camp (Hobart)
- 9/10 Creation Centre/Seahorse World
- 1/2 Cataract Gorge
- 5/6 Marakoopa Caves
- K-2: Holly Bank

Parent Survey

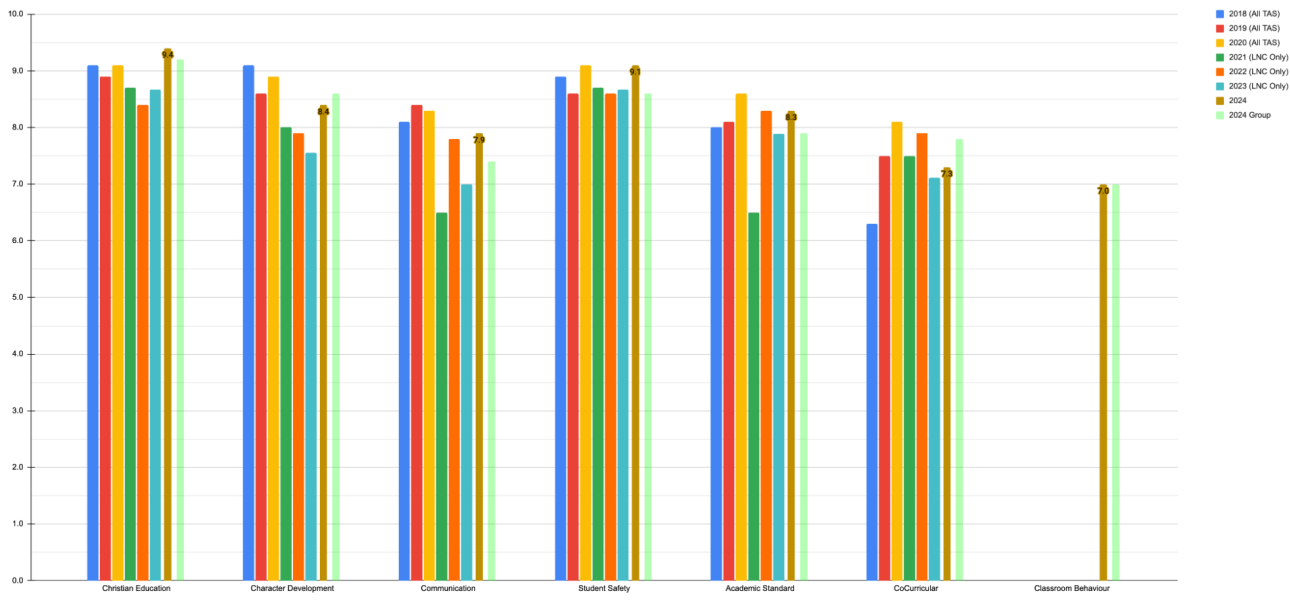
The 2024 Parent Survey results reflect strong levels of satisfaction across all key areas of school life. Parents expressed particular confidence in student safety, and provided very positive feedback regarding communication, Christian education, academic standards, and character development. Co-curricular opportunities were also well received by families. While feedback around classroom behaviour highlighted

an area for further attention, overall the responses affirm the school's commitment to providing a safe, supportive, and high-quality educational environment. As student enrolments continue to grow, the survey data is becoming increasingly stable and reflective of the broader parent community, providing valuable insights to guide future planning and development.

2024 Survey Results - On Campus

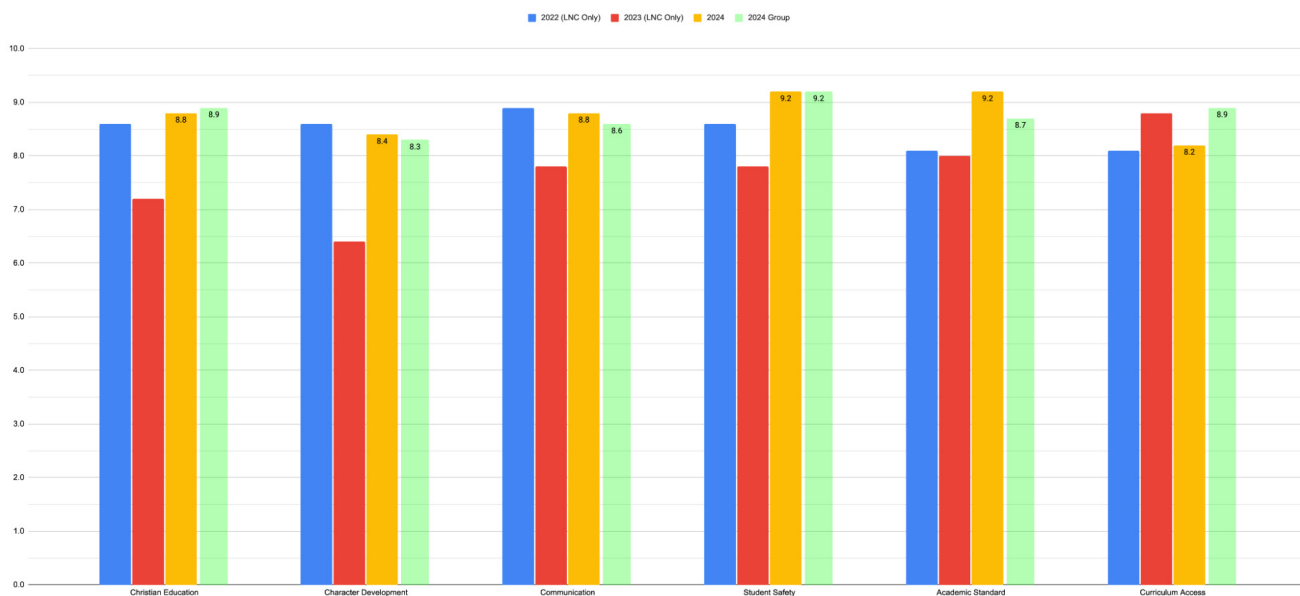


Staff Survey

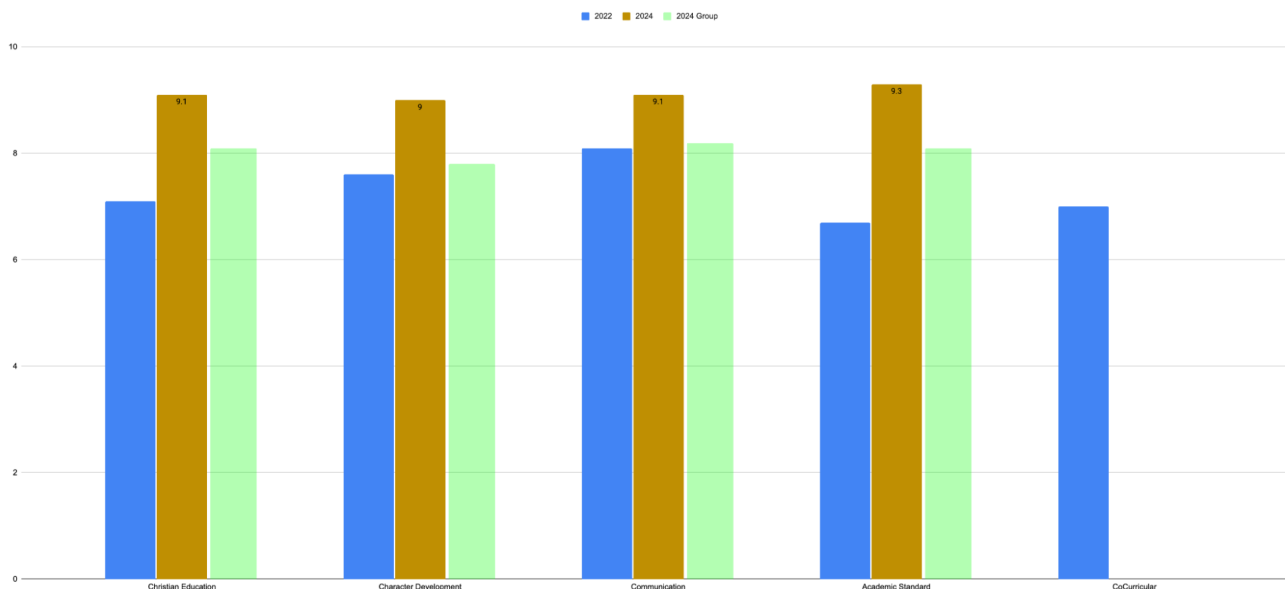


2024 Survey Results - TAS Distance Education

Parent Survey - Distance Education

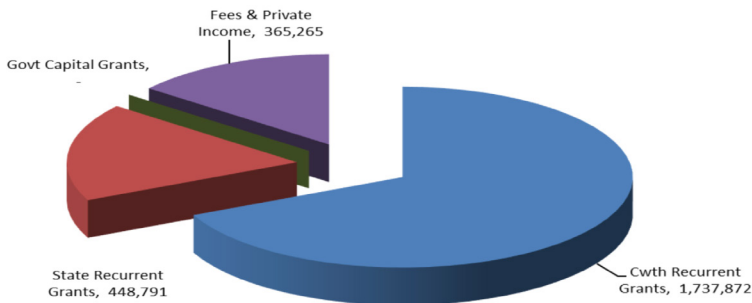


Student Survey - Distance Education



Financials

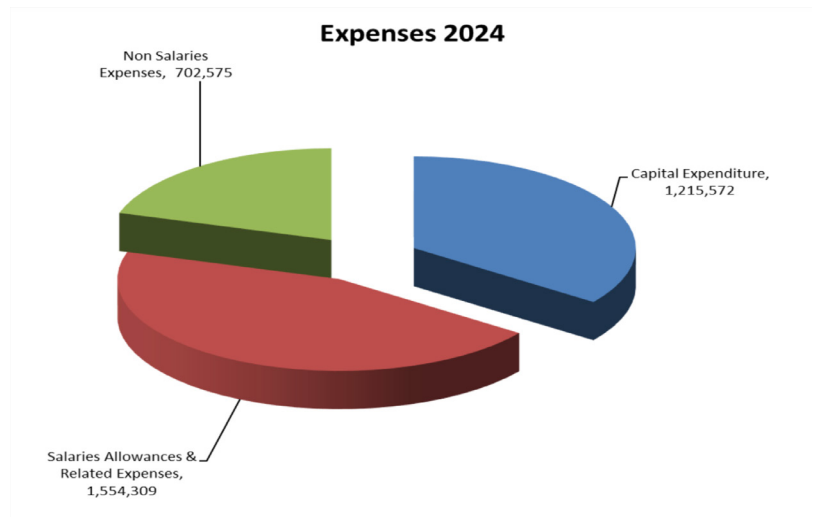
Income 2024



Income 2024

- Cwth Recurrent Grants **\$1,737,872**
- State Recurrent Grants **\$448,791**
- Fees & Private Income **\$365,265**
- Government Capital Grants **\$0**

Expenses 2024



Expenses 2024

- Salaries Allowances & Related Expenses **\$1,554,309**
- Non Salaries Expenses **\$702,575**
- Capital Expenditure **\$1,215,572**



**AUSTRALIAN
CHRISTIAN COLLEGE**

Australian Christian College - Launceston
(03) 6327 8000
launceston@acc.edu.au
103-105 Georgetown Rd, Newnham TAS 7248
acc.edu.au/launceston