



THE FUTURE OF
Saint Ignatius' College Riverview



The Masterplan



Welcome

Saint Ignatius' College Riverview strives to honour its founding vision as a place where each student can realise their highest potential. The wisdom and values of our Jesuit heritage ground the College's students in a unique identity and remarkable tradition. Our educational mission inspires students to discover their own gifts and encourages them to contribute meaningfully to the world around them.

The comprehensive evolution of Saint Ignatius' College Riverview begins with our teaching and learning environments. We aim to build a multifaceted landscape of learning that taps into each student's natural sense of curiosity and discovery, where every classroom becomes a hub of collaborative and creative energies that magnifies a deeper, more enduring and applied learning that will help our students to thrive beyond our gates.

The Masterplan is critical to the full realisation of the College's instructional philosophy, which equips students to contribute to, and improve, a changing world.

Jesuit colleges have flourished over four centuries by retaining core values that are expressed in different ways. Since its humble beginnings in 1880, Saint Ignatius' College Riverview has been an exemplar of this ethos. Today, heeding Fr José Mesa SJ's (Fr General's Secretary for Schools) warning against schools becoming 'museums', the Masterplan is a step towards accommodating and evolving for the future, as the College meets the challenges and opportunities of the 21st century with the same creative spirit that marked its founding.

DR PAUL HINE
PRINCIPAL

FR THOMAS RENSHAW SJ
RECTOR

Inspired by the past, embracing the future

The Masterplan commenced in December 2016 as Saint Ignatius' College Riverview's largest consolidated building program since its foundation in 1880. Building on the College's rich history of providing an inspiring and holistic Jesuit education, the evolution of the College's environments is the culmination of years of planning with a vision to enhance the landscape of learning and prepare for the future.

"Jesuit education has been successful across many cultures because it has adapted to the environment of learners. Today, Jesuit education continues to embrace change in appropriate ways, ensuring that [it] meets the needs of modern learners, developing people who themselves will strive to contribute meaningfully to the world."

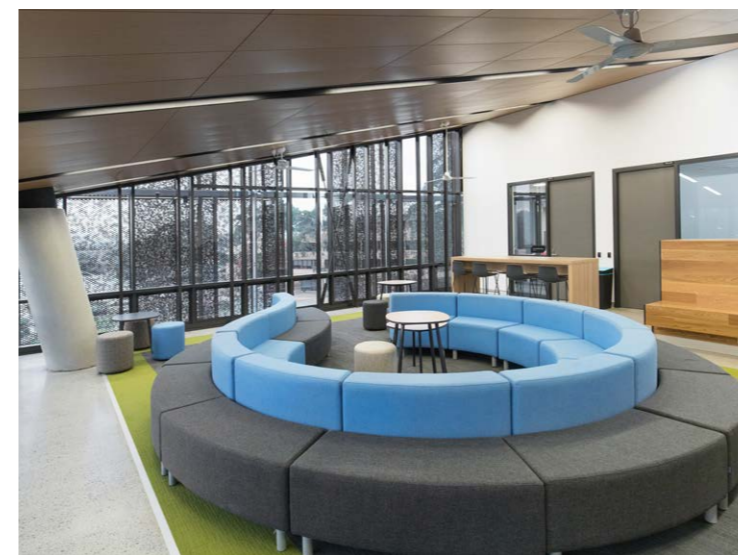
Peter-Hans Kolvenbach SJ, Former Superior General of the Society of Jesus

At its core, the Masterplan is not simply about the physical buildings and campus planning. The striking architecture, sustainability engineering, impressive technological enhancements – all of these are simply a means to an end.

At Saint Ignatius' College, we understand the ultimate goal to be the shaping of the hearts and minds that reside within the campus. The generations of young adults who will be inspired to lead lives larger than themselves, to become men for others, grounded in values of justice, service, discernment, conscience and compassion. The College aims to produce students who are cognisant of, and responsive to a commitment for positive global citizenship in our rapidly changing world.

We stand at the nexus of an exciting point in history, as the past is juxtaposed against the endless possibilities of the future. At Saint Ignatius' College Riverview, we face this prospect with measured confidence, a solid work ethic, a passion for innovation and deep regard for those who are entrusted to our care. The words of Saint Ignatius that resound within the College challenge us daily to help develop people who will make a better world:

Ite, inflamate omnia – "Go, set the world on fire."



The Vision

The Masterplan is the culmination of an audacious vision to renew the College's landscape by building on the strengths of the past, while breaking new ground for the future.

In its current form, the campus represents the rich history of the school and its formidable growth from a 12-student boarding school in 1880 to a vibrant, 1,600-strong College that oversees the education and pastoral care of students from Years 5-12. As Saint Ignatius' College Riverview prepares for the future, the Masterplan is a vital part of creating contemporary educational facilities that encourage integrated learning, collaboration and inter-disciplinary initiatives; a warm place for our boarders, for whom the boarding houses are a second home; and a welcoming environment for all staff, students and the community.

The Masterplan is a leap forward in the evolution of the College, empowering teachers to provide student-centred learning and teaching in state-of-the-art collaborative environments.

Some key considerations

- / Modern teaching and learning spaces
- / Facilities for students and staff such as accommodation, cafeteria, sporting areas, student services and pastoral care spaces
- / Open space and public amenities
- / Strengthened relationships with the surrounding neighbourhood and community
- / Environmentally sustainable growth
- / Vehicle movements, including car access and parking
- / Pedestrian pathways, access, signage and security
- / Public transport facilities



The Scope

The Masterplan, which is expected to span three decades, spaced out to minimise disruptions to classes and the everyday operation of the campus. As a reflection of the College's commitment to an holistic approach in encouraging student development, the Project encompasses five defined priorities which provide the infrastructure and physical framework to underpin the educational and pastoral program at the College.

LEARNING AND PASTORAL CARE

The rectilinear rooms of the past are being replaced by open, flexible learning spaces which cater for the specialised and changing needs of contemporary learning. This approach is designed to encourage collaboration, connection and critical thinking. Stage One of the Masterplan saw this vision come to life in the Therry Building, which was designed to promote multiple learning modes that has enabled these new pedagogies to be employed effectively and authentically; preparing and equipping students to face the future.

Other buildings in this precinct will include the O'Neil Wing and Doyle Wing. The College's pastoral care and student well-being framework has been a key consideration with new House spaces interspersed throughout the College's learning environment.

COMMUNITY

Students, staff and mentors will have inviting spaces to meet, reflect, socialise and belong. We look forward to welcoming our extended community to new spaces which have been inspired by our spirituality, First Nations culture and dedication to innovation. The spaces also allow for the integration of other practical concerns, including catering, maintenance, sports facilities and other important College activities.

BOARDING

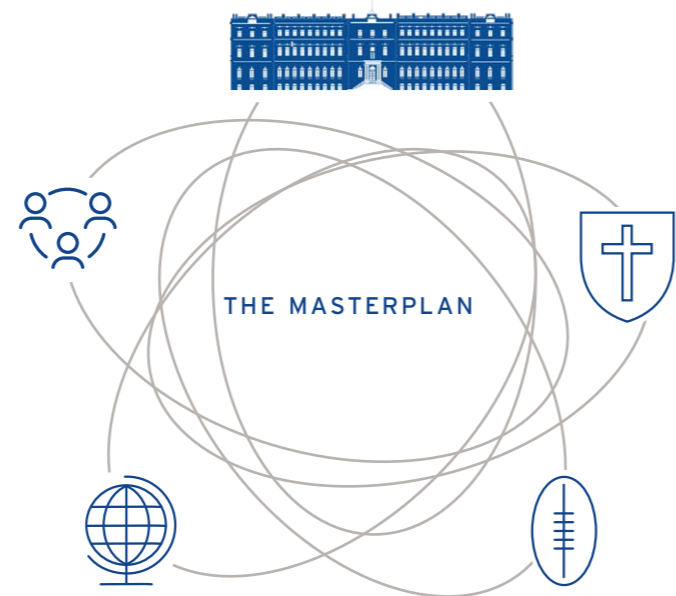
Over time the three current boarding facilities – Charles Fraser House, St John's House and Kevin Fagan House – will be consolidated into a single and defined boarding precinct with new accommodation for all boarders. Replete with lounge and entertainment spaces, game and recreation areas and kitchen facilities, the boarding area will move to the next level of being a home away from home.

SPORTING

An upgrade of existing sporting and recreational facilities will include new basketball courts, consolidation of main playing fields and upgrade of support facilities including the Father Mac Pavilion. Quality recreation space for the learning priorities will also be designed to connect with the sports and recreation spaces.

CULTURAL AND SPIRITUAL

The new Heritage Centre is set to be the finest school museum and archive in Australia, providing an accessible, living, breathing source of history. Situated in the historic St Michael's House, it will provide students and teachers with a resource that complements the curriculum, while playing an integral role in preserving and celebrating the history of the College. The Dalton Chapel, which also comprises part of this precinct along with Arrupe and St Michael's House, will enjoy continued maintenance and restoration befitting its place as the spiritual core of the College.



Key

- Main road
- Only delivery / mtg vehicles on this road (reducing cars travelling around the campus)

Reimagining the future of education

The industrial model of education that employed a rigid, teacher-centred and content-driven paradigm has been eclipsed by a porous, agile and virtual reality of the present and the future. The Masterplan delivers modern educational spaces that accommodate this new style of learning, encouraging connection, collaboration, reflection, multi-modal learning and problem solving.

Boxed-in rooms sectioned off by brick or plaster are making way to the transparency and engagement encouraged by open, flexible learning spaces and expansive glass. Even as the physical environment opens up to new possibilities, so too does our understanding and approach to learning.

STUDENT-CENTRED PERSPECTIVE



The college's Teaching and Learning Strategy is designed to promote student-centred learning with an emphasis on personal responsibility for the acquisition of content, skills and processes. Utilising a wide range of teaching methodologies, the new adaptable and flexible spaces will allow greater mobility and increased student engagement.

INTEGRATED LEARNING



Saint Ignatius' College Riverview is committed to implementing a range of innovative methods, strategies and technologies to deliver the outcomes required of the citizen of the twenty-first century. Our current generation of learners need to be agile and flexible thinkers who are able to collaborate, innovate and discover new ways of thinking and problem solving. The Masterplan delivers in providing the learning spaces and resources that enable students to bring these skills together in experimentation, modelling and prototyping, equipping them to be leaders and frontrunners in their chosen fields.

STUDENT EXPERIENCE OF LEARNING AND TEACHING (SELT)



Capitalising on the latest research informing the teaching and learning process, the SELT Survey reflects the College's commitment to improving learning outcomes. The Survey provides teachers and leaders of learning with meaningful feedback in a systematic method to ensure that students' needs are being met in each classroom. This complements other more recent developments in Teaching and Learning, such as Project Based Learning (PBL), STEM (Science, Technology, Engineering and Mathematics) and teacher observation.

DATA ANALYTICS



The introduction of new visibility software at Riverview enables the College to track measurement data and student performance, with the aim of strengthening educational outcomes for students.

This cutting-edge software is being used to determine key metrics as the indicators of success in the teaching and learning process, and thus advance students' achievements in a measured, transparent and methodic way.

PROFESSIONAL DEVELOPMENT PROGRAM

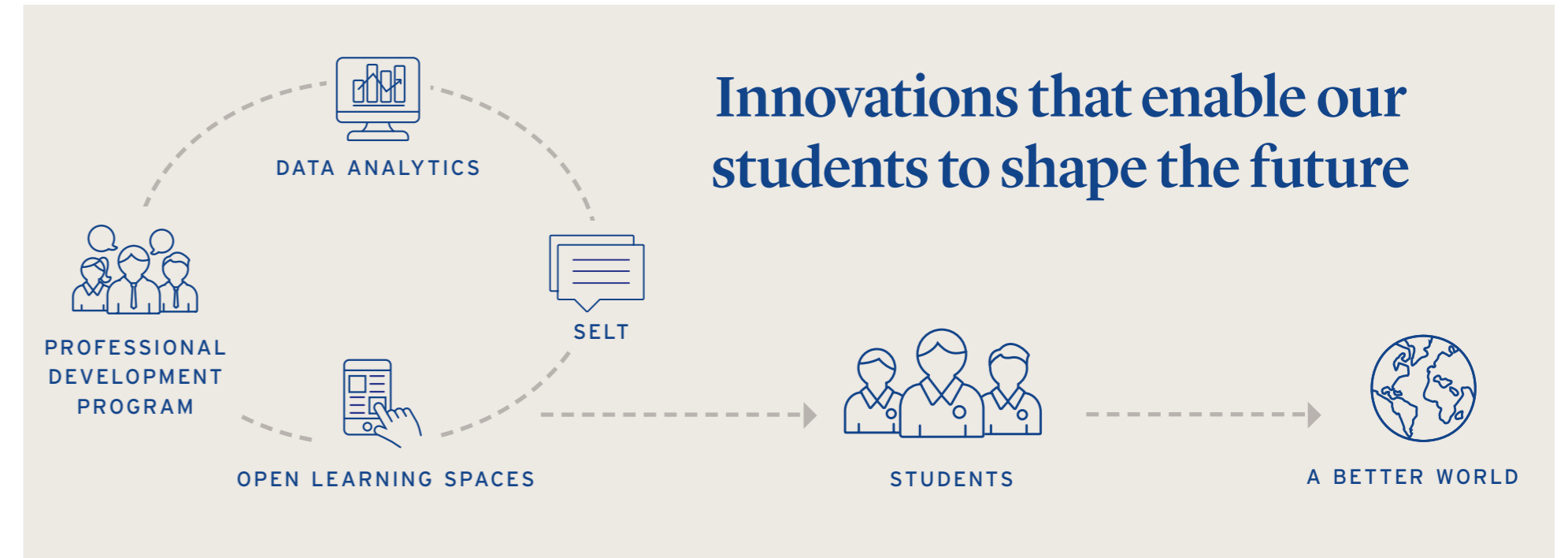


Teachers at Saint Ignatius' College are engaged in a range of external professional development conferences, courses and workshops to ensure best practice pedagogy for the new flexible learning spaces. Through the Teacher Review and Development Program, educators learn advanced skills aligned to the teaching standards; while other programs including the Aspiring Leaders Program (in conjunction with the AISNSW), support for teacher accreditations and external school visits, are all geared toward inspiring and elevating the quality of teaching at the College.

COLLABORATIONS WITH UNIVERSITIES



The College works in collaboration with different universities and supports pre-service teachers on short placement blocks as part of their studies. Since 2015, the College has worked with The University of Sydney, University of New South Wales and The Australian Catholic University to develop year-long Teacher Education Scholarships, providing our staff with the opportunity to mentor pre-service teachers while keeping up to date on new pedagogies and practices that advance the cause of education in the future.



A Pastoral Core

The heart of Saint Ignatius' College Riverview will always maintain a pastoral beat – what we call *cura personalis*. We are committed to the welfare and best interests of the students entrusted to our care. While their classrooms and facilities may change in the coming years, the quality teaching and genuine pastoral care never will.

Research has established the connection between student well-being and student achievement, and at Saint Ignatius' College Riverview, these connect in the House system. From the moment they enter secondary school until the moment they graduate, every boy in the College has a place of safety and connection. In the best of the Jesuit tradition, each student is asked to be a man for others, mentoring and looking out for the younger boys who enter the House.

While each House currently has a homebase within the College, we look forward to offering even better facilities as part of the Masterplan – spaces that will continue to help students cultivate and live out a sense of belonging, with amenities that are designed to offer greater comfort and stewardship.



More Than Bricks and Mortar

THE EXCITING PRESENT: THE TERRY BUILDING

As the frontispiece of the Masterplan, the Terry Building has a striking and modern aesthetic, and is designed to house agile, interactive and multi-modal learning facilities.

Comprising 24 contemporary learning spaces with natural light and flexible open areas, the Terry Building is home to four faculties, equipped with generous staff areas and six House areas to ensure complementarity between teaching and pastoral care, with facilities for support, learning and socialising. An upgrade of surrounding landscapes has also seen better integration with its surrounds and a sense of space, while providing further opportunities for outdoor learning.

The opening of the Terry building in 2018 marked the beginning of the Masterplan, an exciting new era at Saint Ignatius' College Riverview.

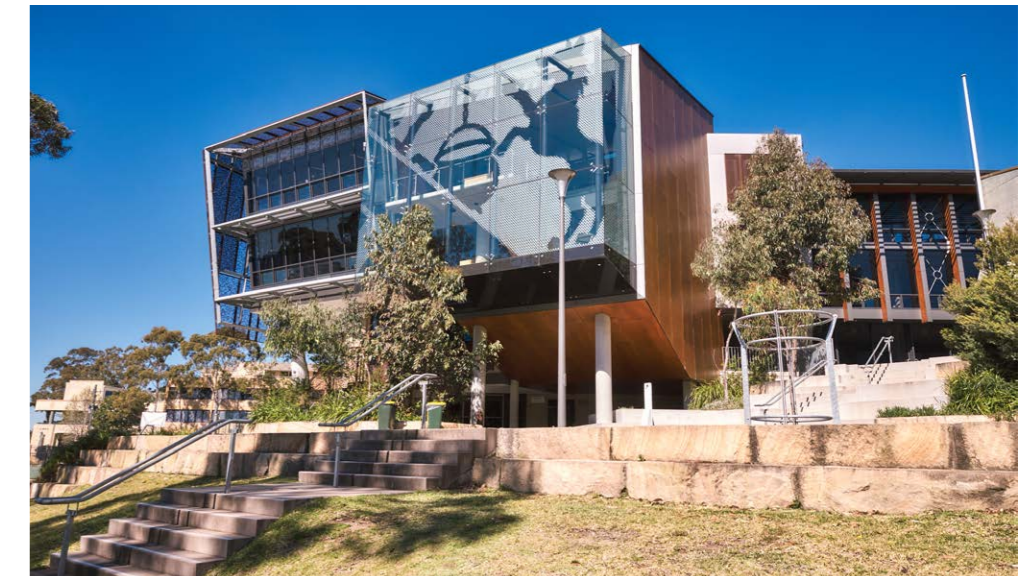
“This building represents an evolution of Riverview’s approach to learning... we need to ensure that our approaches to learning provide the right skills for our young people to manage their world, and more for us, as Ignatian educators, we want our young people to be prepared to change the world.”

Our vision here is very clear. We are reshaping the College into a centre of learning which is innovative, creative and ready for the next 20 years of teaching and learning.”

Russell Newman, Deputy Principal Teaching & Learning

Creating a quality sustainable learning environment

- / Maximising natural light to reduce energy consumption
- / Exposed concrete to create thermal mass, assisting a temperate flow of air throughout the building
- / Natural ventilation for improved alertness, wellness and performance
- / Solar panels to harvest natural energy and support sustainability
- / Harnessing renewable energy and passive building systems
- / Together, these design principles aim to optimise environmental efficiencies while creating a comfortable and healthy learning environment.



Wingar

OUR NEW HOME FOR STEMP

Our new STEMP building, Wingaru, is the next phase of the College's masterplan, continuing our commitment to contemporary learning spaces that meet the needs of today's world.

Wingar - which means 'to think' in the Cammeragal tongue of our First Nations people of the area - will provide dedicated spaces for the study of STEMP: our specialist learning and wellbeing place for Science, Technology & Applied Studies, Engineering, Mathematics and Personal Development, Health & Physical Education (PDHPE). Wingaru will also contain several pastoral care Houses. This is in harmony with the distinctive nature of Ignatian spirituality of discernment, discovery and deep reflection.

Building features:

- / Five storey building with contemporary, adaptable teaching and learning spaces
- / Dedicated faculty spaces for the teaching and learning for Science, Technology and Applied Studies, Engineering, Mathematics and PDHPE
- / Shared general learning spaces for inter-disciplinary and Project Based Learning
- / Six dedicated House areas - providing greater equity among Houses
- / Co-located staff rooms - fostering accessibility and approachability with educators and supporting our staff with greater professional connections
- / Multi-purpose learning space
- / Covered Outdoor Learning Area (C.O.L.A)
- / Ground floor Canteen with dual access to/from our main courtyard, with expanded food and beverage options
- / Creation of an educational precinct, connecting Wingaru to the O'Neil Wing
- / New landscaped areas reflecting the site's heritage with spaces for outdoor learning, recreation and storytelling
- / Flexible indoor and outdoor spaces for teaching, learning, recreation and community engagement encouraging improved wellbeing



Looking To The Future*

VAUGHAN

The new Vaughan building will create improved contemporary learning environments, House bases and staff areas. Vaughan will become the new home for the College's Inclusion Program students and the much loved Blue & White staff café.

ARRUPE, DOYLE & ST MICHAEL'S HOUSE

The Arrupe building, formerly the Main Building, will see its interior modernised and upgraded. The building will become the Management and Administrative hub for the College. The 'front door' of the school will once again become the main entrance housing the reception area. The Arts will be celebrated in this new environment with its high ceilings, heritage aesthetic and natural light.

Saint Michael's House is the oldest building on campus, and soon to become the home of the College's Heritage Centre. Containing spaces for archive display, as well as an alumni meeting room, it will open up into a pavilion creating a renewed and inviting sense of community on campus.

LINK

The new Link building will be the heart of connectivity for the College, interlocking the Northern and Southern learning areas of the senior campus. The Ignatian Centre, ICT, House areas, Education & Pastoral Leadership and Staff Services will work harmoniously in this innovative space.

*Masterplan building initiatives and render illustrations are subject to change in accordance with College priorities.

BOARDING

In the Masterplan, the boarding precinct will become centralised and co-located in a purpose-built residential facility in conjunction with and in front of Kevin Fagan House. Boarding environments will feature modernised amenities, room layouts and recreational and tuition spaces.

REGIS

The Regis campus is an important consideration within the College's Masterplan and will continue to evolve to inspire our youngest students.

RECREATION REIMAGINED

The Masterplan includes staged investment in improving and enhancing the College's sporting environments and will over time include:

OVALS

Upgrading ovals inclusive of surface enhancements, drainage and irrigation improvements as well as renewed sporting and spectator amenities. An all-weather multi-purpose synthetic oval is being considered to provide continuity of play throughout inclement weather.

FACILITIES

The indoor sports facilities, pool, and strength and conditioning areas within the Gartlan centre are being reviewed for rejuvenation.



FAQs

THE NEED: ACADEMIC AND OPERATIONAL

Why does the College need such a comprehensive building plan?

Since it was established in 1880, the College has grown significantly in the number of buildings and facilities required to cater for its increasing number of students and staff. Each expansion has largely been the result of specific requirements, but it is now time to create a definitive and overarching plan that achieves the best use of all existing facilities while creating innovative and inspirational spaces that adapt to the future.

Will the building works affect the day-to-day operation of the College?

No, the College will remain fully operational throughout the building works, though some areas may be restricted or access diverted while works are underway. Every effort will be made to minimise disruptions while ensuring the safety of our students, staff and visitors.

How long will construction take?

The different stages of the plan will be rolled out as funding and timetabling permits. With Stage One (Therry Building) completed, the next stage will commence at the end of 2022 with the foundation work for the Wingaru building.

Does the College plan to increase enrolments?

At the present time, the College is not considering expanding enrolments on the Senior Campus. The main purpose of the upgrade is to improve facilities for existing students and the wider community.

FINANCES

Will this affect my school fees?

A change in school fees is not anticipated to accommodate the building plan. College Council is committed to capping the annual fee increase at an overall average rate of 4.75% for Tuition Fees and 4.00% for Boarding Fees, in line with the College's Long Term Financial Model that seeks to maintain the quality and sustainability of the educational offering.

How is this project being funded?

The Masterplan is made possible through the current financial modelling of the College along with philanthropic income from significant bequests. Commonwealth and State funding does not provide for capital works maintenance or the redevelopment of the College, therefore future construction will rely on generous community support, including major giving, voluntary contributions to the building fund, annual gifts and bequests.

ENVIRONMENT & INNOVATION

What measures have been taken to reduce our carbon footprint?

The Masterplan is guided by sustainability principles including: efficient building design, waste avoidance, rainwater harvesting, ventilation and thermal mass. The Therry Building is equipped with solar panels to harvest natural energy and support sustainability, while roof orientation and pitch have also been established to support optimum efficiency from photovoltaic systems, should they be installed at a later date.

SUSTAINABLE BUILDING PRINCIPLES

The College has a vision to work towards constructing a more humane, just, sustainable and faith-filled world, acknowledging the impact of climate change and the importance of environmental stewardship.

ECOLOGICAL FOOTPRINT

Each project takes into consideration energy efficiency, carbon footprint reduction, efficiency in building design and waste avoidance, reduced embodied energy in materials and sustainable procurement.



CARBON EMISSIONS & CLIMATE CHANGE

Strong emphasis is placed on delivering buildings and shared spaces that have low energy demands and a component of renewable energy supply.



HEALTH & WELLBEING

Ensuring buildings provide maximised levels of fresh air, daylight and access to nature. Creating healthy and inspiring engagement and improved learning.



Saint Ignatius' College Riverview

Tambourine Bay Road, Lane Cove NSW 2066

T +61 2 9882 8222 | **E** advancement@riverview.nsw.edu.au | **W** giving.riverview.nsw.edu.au | **W** riverview.nsw.edu.au

Saint Ignatius' College Riverview acknowledges that the College is situated on Cammeraigal land and we pay our respects to all First Nations people past and present.
We honour the spelling provided to us by local Elders, acknowledging its various other iterations as Cammeraygal, Gamaraigal, Kameraigal and Cameragal.