

Emmanuel
COLLEGE



Annual Report 2024



Vision and Purpose

Vision

A caring Christian community inspiring intelligent, hopeful engagement with our world.

Purpose

Because the world needs people of good character who pursue truth.

Our school at a glance

Website www.emmanuel.qld.edu.au

ABN 71 010 563 256

Address 17 Birmingham Road, Carrara QLD 4211

Postal address Locked Bag 5, Nerang QLD 4211

Phone +61 7 5561 4000

Year levels offered Preparatory to Year 12

State, Independent or Catholic Independent

Co-Educational or single sex Co-Educational

Location and details Emmanuel College is located at Birmingham Road, Carrara on the Gold Coast. The College offers schooling from Preparatory through to Year 12 and provides a fully accredited Out of School Hours Care facility. There is also an affiliated on-campus kindergarten, Little e's. The College is centrally positioned on the Gold Coast within a 15 to 20 minutes drive from Robina, Varsity Lakes, Mermaid Waters, Broadbeach, Clear Island Waters, Benowa, Benowa Waters, Southport, Ashmore, Highland Park, Mudgeeraba and Bonogin.

Emmanuel College is renowned for its high levels of academic achievement, high quality of Information Technology, Creative Arts, Sport, Service and 'Compass' programs, a reputation of a caring and dedicated staff, and a beautiful campus. Extensive co-curricular offerings are listed later in this report.

Religion and affiliations Emmanuel College is an independent multi-denominational Christian school and is a member of I.S.Q. (Independent Schools, Queensland), A.C.S. (Associated Christian Schools) and A.H.I.S.A. (Association of Heads of Independent Schools, Australia).

Funding <https://myschool.edu.au/school/48094/finances>



Student Outcomes

Enrolments and Attendance Rates

As of 1 November 2024, there were 724 students enrolled in the Junior School and 865 students enrolled in the Senior School – a total of 1589 students. Emmanuel College's high attendance rates indicate a high degree of satisfaction among students.

Year Level	Cohort Size	Attendance Rate
Prep	94	98.3%
1	97	93.6%
2	102	94.1%
3	105	93.9%
4	107	94.5%
5	112	94.4%
6	107	93.4%
7	164	91.5%
8	159	91.1%
9	133	90.4%
10	141	89.4%
11	146	89.9%
12	122	84.7%



Managing Attendance

- > Absentee Line (07) 5561 4055 or sso@emmanuel.qld.edu.au
- > Unexplained absences are investigated
- > Parents/Guardians are contacted by Student Services if a student is absent and we have not received a telephone call or an email
- > Late Arrivals – Parents/Guardians sign their child in at Student Services/Early Years
- > Early Leave – Parents/Guardians sign their child out at Student Services/Early Years
- > Extended absences – Written requests are required to the Head of School/Dean of Year

NAPLAN

The results of the NAPLAN results at Emmanuel College for each of the year cohorts are well above State averages and the National Benchmarks.

	Writing (Avg. Scale Score)		Reading (Avg. Scale Score)		Spelling (Avg. Scale Score)		Grammar & Punctuation (Avg. Scale Score)		Numeracy (Avg. Scale Score)	
	EC	QLD	EC	QLD	EC	QLD	EC	QLD	EC	QLD
3	440.8	402.4	437.8	391.7	416.3	387.8	434.4	397.8	433.1	392.9
5	538.1	470.2	547.7	482.7	510.0	474.7	545.0	492.5	541.0	478.9
7	581.5	524.4	585.5	523.1	557.7	530.2	583.5	527.2	590.0	528.6
9	631.4	557.7	612.9	550.8	593.4	560.2	612.2	549.1	620.7	551.8

Year 12 Outcomes

	No. Students
Senior Education Profile (SEP)	122
Queensland Certificate of Education (QCE)	122 (100%)
Vocational Education and Training	115
Certificate I	1
Certificate II	110
Certificate III	47
Diploma	16
School-based apprenticeship or traineeship	14
University studies (while at school)	8
Certificate of Academic Commendation (achieving A's in 6 or more subjects)	17
Subject Achievement Commendation (achieving 100% in one or more subjects)	8
% of ATARs above 95*	23.60%
% of ATARs above 80*	64.04%
% of ATARs above 60*	92.13
Number of QTAC Applications	97
% of QTAC Applicants receiving an offer**	95.88%



* 89 students opted to share their ATAR with the school

** Data does not include offers from interstate, offers from private universities or direct entry offers

Retention Rate

> Emmanuel College retains a high number of students from Year 10 to Year 12.

> For the 2024 cohort, the Year 10-12 Apparent Retention Rate is 91.73%. This is the number of full-time students in Year 12 in any given year expressed as the percentage of those students who were in Year 10 two years previously. (Movements of students in and out of the College are not shown).

Post-school Destinations of Students

Post-school destinations of students are gathered via the Next Step survey. Outcomes from this survey will be published alongside this report prior to 30 September 2025.



Parent, student and teacher satisfaction

The College conducts satisfaction surveys with student families and staff on a biannual basis. The most recent School Climate survey was conducted with student families in 2023, and the most recent staff survey was conducted in 2024. The college also conducts annual exit surveys with graduating Year 12s and their families. A summary of the outcomes from these surveys is presented below:

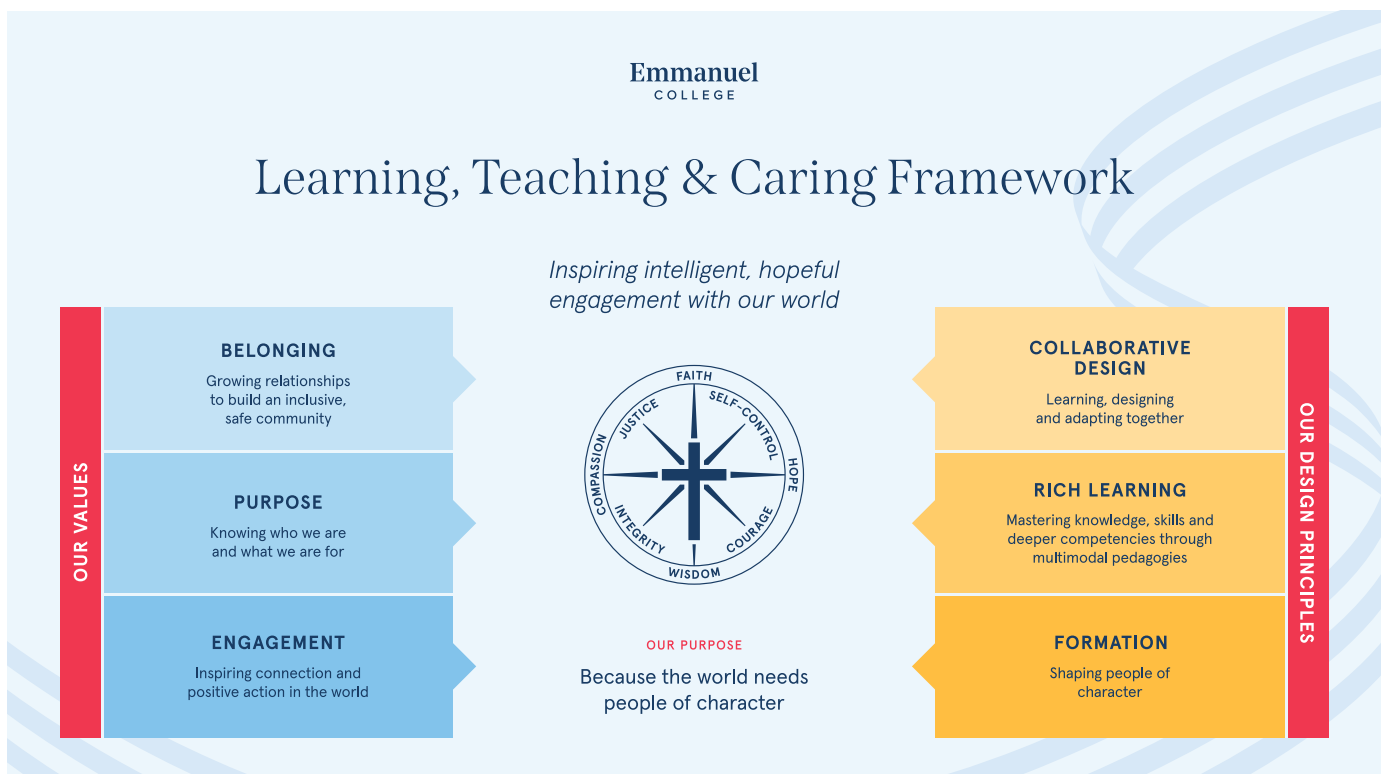
Drawing from the School Climate survey, an overall Net Promoter Score (NPS) of 44 was measured with Junior School NPS of 53 and Senior School NPS of 33.

Areas for celebration

- > Key indicators for the experience of Emmanuel College families such as Learning, Teaching and Caring and the Emmanuel Culture all received positive feedback from families.
- > Staff at the college showed significant alignment with the values of the organisation and identified significant improvements in work processes compared to the previous survey.
- > School Climate survey indicated consistently high customer satisfaction results across both the primary and secondary sub-schools of the college.

Focus points for improvement

- > School Climate survey indicated areas for future improvements in communication and pastoral care.
- > Staff indicated pay, benefits and the management of change as areas the college could improve on.



Staff Profile

Professional Development courses/suppliers

- Australian Library and Information Association Censorship Training
 - ACEL Conference
 - OAKS Institute – Theory Agency
 - TSAS Symposium
 - Educate Plus
 - Future Schools Alliance
 - Graphic Teaching & Caring Framework
 - EDUTech
 - Qualtrics
 - Company Directors Course
 - Ozzacom Pty Conference
 - IT Conference
 - AUSCERT 2024
 - ACEL Conference
 - AHISA Principals Conference
 - Teaching Students with Dyslexia
 - Christian Schools ACS Leadership Summit
- ISQ Leaders Forum
 - Volunteering Queensland Staff Training in Active Volunteering
 - Next Ed Conference
 - Critical policies, lockdown, WHS, fire, emergency, medical
 - First Aid and CPR Training
 - ISQ Child Protection accreditation & regulations
 - ISQ – Sustaining schools governance
 - NCCD training
 - Austswim Aquatics In-Service
 - Schoolbox Training
 - Synergetic Training
 - Curriculum Connect Symposium
 - Elevate Education Time Management Conference
 - McCrindle Research Workshops
 - Qualtrics

Expenditure on professional development

Total number of teachers	Total expenditure on teacher professional development	Average expenditure on professional development per teacher
140	\$102, 465	\$732

Teacher qualifications

Qualification	Percentage of classroom teachers and school leaders who hold this qualification
Doctorate	1%
Masters	21%
Bachelor Degree	75%
Diploma	3%



Staff composition

Staff Identifying as Indigenous 2

Staff retention rate

Staff retention rate for 2024 92%

Staff attendance rate (including pupil-free days)

Number of staff	Number of school days	Total days staff absences	Average staff attendance rate
285	193	1367	96%