



Living Waters
Lutheran College

Strategic Plan

2022 to 2025





“

Lutheran schools are communities that value learning as God's gift to people for their wonder, growth, and to inspire them ...

PURPOSE

Why the College community exists

To nurture, challenge and inspire achievement, so that we make a difference within our College and the wider community.

VALUES

How we relate to each other and the world

We nurture

- We build strong relationships based on love, compassion and forgiveness.
- We care for others and ourselves, providing a place where everyone feels they belong.
- We encourage one another, and collectively celebrate achievements and successes.

“

We care for others and ourselves, providing a place where everyone feels they belong.





“

We are curious and creative, challenging ourselves to learn, understand and grow.

VALUES

How we relate to each other and the world

We challenge

- We are curious and creative, challenging ourselves to learn, understand and grow.
- We thrive on achievement and aspire to be our best.
- We are resilient. We persevere, adapt and overcome.

VALUES

How we relate to each other and the world

We inspire

- We look to the future, searching for possibilities and appreciating opportunities.
- We are action-oriented and pursue our passions enthusiastically.
- We strive to impact our community and the world for good, serving with integrity.

“

We are action-oriented and pursue our passions enthusiastically.





VISION

Living Waters in 2024

We lead in learning

Our strong learning culture inspires us to achieve, while encouraging and supporting others. Student learning and growth is fostered through contemporary thinking and the best teaching practices.

We are known as a high achieving learning community that cares.

We are connected

Shaped by the Christian values we embrace, we are a diverse community working together and with a strong sense of belonging.

We make a difference

We reach out to have a positive impact within the College and wider community.

We are vibrant and thriving

Our indoor and outdoor spaces inspire learning and physical, social and spiritual development.

MISSION

How we will realise our Vision

At Living Waters, we achieve excellent outcomes for students, staff and the College through positive relationships in which we challenge and support each other to grow.

Our Christ-centred values and Lutheran ethos underpin every decision and action. We care for each other to ensure everyone feels valued and that they belong.

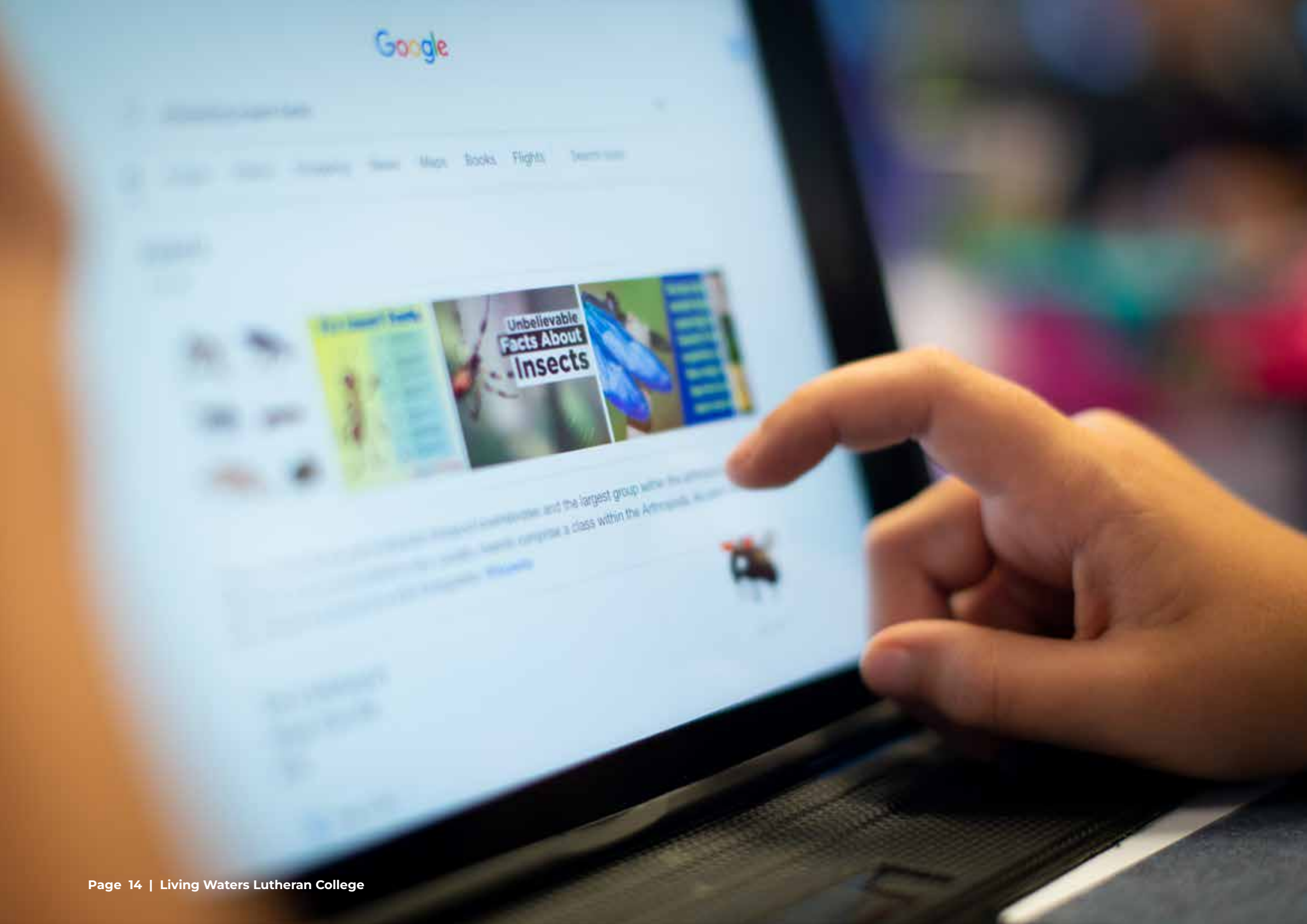
We help every student to flourish academically, emotionally, physically and spiritually. Our teaching is highly effective, informed by research and data analysis to ensure students are continually challenged, supported and engaged in their learning and growth.

We strive to strengthen the Living Waters community and reach out to make a positive contribution beyond the College gates.

“

We help every student to flourish academically, emotionally, physically and spiritually.





STRATEGIC PRIORITIES AND STRATEGIES



Teaching and Learning



Culture



Community



College Development



TEACHING AND LEARNING

Priority actions

- Adopt a clear whole College vision and framework for learning.
- Ensure teachers' pedagogy reflects up-to-date knowledge and application of best practice.
- Promote a learning culture whereby students of all abilities are supported and challenged to achieve excellent progress across all learning areas and year levels.
- Provide options to ensure diverse ATAR and vocational pathways are well served.



CULTURE

Priority actions

- Embed core values that reflect our Christian identity into everyday life.
- Strengthen student and staff pastoral care systems to maintain a focus on enhanced well-being.
- Develop structures for collaboration and decision-making so that students and staff feel valued and heard.
- Partner with families in supporting students' educational journeys.



COMMUNITY

Priority actions

- Promote College initiatives that foster a sense of belonging and encourage strong connections between staff, students, senior leaders and parents.
- Engage with Alumni and build ongoing collaborations.
- Embrace opportunities to engage with local Christian communities, participate in service projects and partner with wider community agencies.
- Implement the Reconciliation Action Plan.



COLLEGE DEVELOPMENT

Priority actions

- Implement a clear plan to progressively upgrade campus facilities and spaces to enable contemporary teaching in an engaging environment.
- Maintain a targeted marketing campaign to raise community awareness of the College, its strengths, value for money and affordability.
- Strengthen relationships with local long day care and pre-kindy service providers.



**Living Waters
Lutheran College**

176 Currie Street, Warnbro WA 6169
08 9593 1211

admin@livingwaters.wa.edu.au
livingwaters.wa.edu.au