

# Prospectus



A Christ-centred  
education shaping  
courageous young  
people who are  
confident to serve.



**Tyndale**  
CHRISTIAN SCHOOL

[tyndale.edu.au](http://tyndale.edu.au)



**“All thy children  
shall be taught  
of the Lord.”**

- Isaiah 54:13

# Welcome to Tyndale!

Welcome to Tyndale Christian School.

Choosing a school for your child is one of the most important decisions you will make in terms of investing in their future.

At Tyndale we believe that God has given parents the responsibility for the nurture of their children by instruction according to the Word of the Lord.

Tyndale Christian School is committed to partnering with parents in the Christian education of their children by equipping students to be disciples of Jesus through Christ-centred Biblical education.

At Tyndale, we affirm the Biblical truth that each child is made in the image of God and are therefore committed to providing a holistic education where each child has the opportunity to identify and develop their God-given talents. We seek to develop character that supports our students to bring glory to God in all spheres of life and be the people that God has created them to be.

Tyndale's Biblical framework for teaching and learning enables students to be seekers of Biblical truth who understand that their identity is in Christ.



Through the work of the Holy Spirit and the faithful teaching of passionate and dedicated Christian teachers, our students are equipped to serve the Lord with gladness by serving others with love, justice and compassion.

I commend our School to you and look forward to meeting you on one of our school Tours.

- Rebecca Hall, Principal





---

## Our mission

To equip students to be disciples of Jesus through Christ-centred, Biblical education.

## Our Vision

Partnering with parents in a covenant community, nurturing servant-hearted students with an understanding of Christ's saving grace while providing academically rigorous education in a safe and caring environment.

# The special task of the school

Our Educational Creed states that it is the special task of the school to train children in the use and development of their God given talents so that they may be equipped to serve Christ as King in all spheres of life to the Glory of God and the well-being of all humanity.

Christian Schooling is Gospel work. The privilege and responsibility of a Christian School is to assist Christian parents to bring up their children in the fear and nurture of the Lord.

## **“Tyndale seeks to be a community characterised by Grace.”**

The school is an extension of the Christian home where together parents and teachers seek to encourage children to view the world through the lens of the Gospel. This view of life and the world gives great meaning, hope and purpose to schooling.

Tyndale’s goal is to assist students to see that the Lord is sovereign over all of creation and that His kingdom extends to all parts of life and to encourage students to honour the Lord Jesus in their learning and their living.

Our students are encouraged to be God’s people in God’s world. The school therefore not only seeks to develop in students the skills needed to survive and thrive in this world, but seeks also to encourage and equip them to act as agents of change in a world that needs the message of hope.

Students are taught to critique the world in which they live so that they can engage the world by faithfully serving as God’s image bearers with love, justice and compassion towards others.

Tyndale is a school where the role of parents is affirmed and encouraged. Parents are involved in all aspects of the life of the school. Teachers are partners with parents to assist them in the special task God has given them in raising their children.

We seek to make Tyndale a place where people care for each other and give Jesus His rightful place in education, that is, at the very centre. Tyndale seeks to be a community characterised by Grace.

# Christian Character and Formation

At Tyndale we partner with parents in Christian community to nurture servant-hearted students who have an understanding of Christ's saving grace. We provide an academically rigorous education in a safe and caring environment.

Tyndale works with families to equip students to grow in competence and confidence in every subject area, while challenging them to develop a Christian worldview. We provide an education that is tailored to the whole child – spiritually, intellectually, emotionally, physically and socially.

The Tyndale curriculum is embedded within a Christian worldview in which each student learns how to be discerning and critical thinkers who can interpret the world through the lens of Biblical truth, develop a strong

sense of purpose knowing that their identity is in Christ and grow in their capacity to serve with humility.

At Tyndale we equip students to be disciples of Jesus embedding Christian principles, values, and teachings into our lesson plans and community events, through reading the Bible, music, prayer, service, and role modelling from Christian staff.

The Tyndale teaching team encourage students to recognise God's greatness in his creation and look to see how God is reflected in the lives of others. We help children persevere through challenging times by encouraging them to trust God as they step out in faith. We believe in nurturing children's faith and gifts while encouraging them to use those gifts to serve God in all of life and to benefit others.



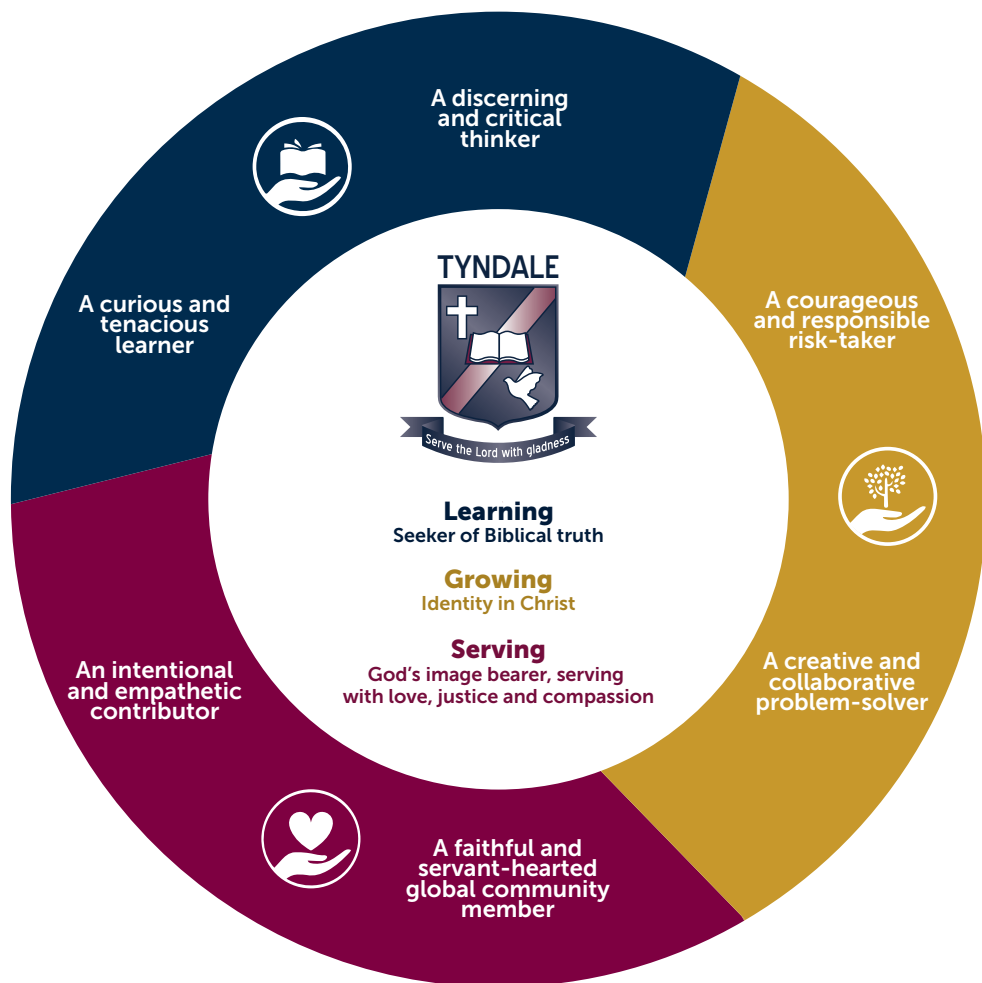


A close-up photograph of a young woman with red hair tied back, freckles, and a school uniform (dark blue jacket over a maroon shirt). She is looking down intently at a book or paper. In the background, other students in similar uniforms are visible but out of focus.

**“Let the children come to  
me...for to such belongs  
the kingdom of God.”**

- Luke 18:15-17

# Our Learner Profile







**“The fear of the Lord  
is **the beginning of  
wisdom...**”**

**- Proverbs 9:10a**

## Learning, Growing and Serving

Our vision for learning at Tyndale Christian School is that our students would be prepared and equipped for a life of service as disciples of Jesus Christ. Therefore, it is our desire that students would learn to be seekers of biblical truth; grow in their identity in Christ; and, as God's image bearers, serve with love, justice and compassion.

This is at the heart of our Learner Profile.

A photograph of a woman with dark hair tied back, wearing a dark blue top and a blue and white earring, looking at a young boy. The boy is wearing a dark blue jacket with a red and white logo on the chest. They are both looking at a yellow stick that the boy is holding. The background is a blurred indoor setting.

**“Tell me and I forget,  
teach me and I remember,  
involve me and I learn.”**

- Benjamin Franklin

We seek to promote engagement with learning where students are actively encouraged to become curious and tenacious learners and discerning and critical thinkers. Approaches to learning such as promoting questioning, researching, identifying connections and applying and transferring knowledge all assist students to deepen their understanding and move beyond the superficial.

It is also expected that, as students courageously take responsible risks in order to learn and develop the ability to creatively and collaboratively problem-solve, that they will grow and become people of character.

Lastly, with the intention that our students become intentional and empathetic contributors and faithful, servant-hearted global community members, opportunities are given to them to serve the Lord with gladness. In the context of learning, this looks like giving students the capacity to faithfully use their gifts and to envision themselves as being active participants to promote restoration in a wounded world.

In the Primary, our teachers have been actively working to improve the quality of teaching, by prioritising explicit instruction

in all aspects of literacy and numeracy. Explicit instruction has a strong and ongoing evidence-base to support its effectiveness in teaching. In simple terms, explicit instruction involves a three step process: 1. Teachers model new skills and learning for the students, 2. Teachers guide the student in applying the new skill or learning, 3. Independent practice of the new skill or learning. The assistance of the NSW Literacy and Numeracy Action Plan has been invaluable in honing our craft as teachers, and helping us to be insightful and instructional learners.

Secondary teachers further the learning of students through explicitly teaching the New Pedagogies for Deep Learning competencies which are Character, Citizenship, Critical Thinking, Communication, Collaboration and Creativity. In teaching students how to learn and emphasising the process of learning, we are promoting a culture where students take ownership and responsibility for their learning and are able to make connections between what they are doing in the classroom and the real world.





## Tyndale Before & After School Care

Tyndale before and after school care provides an out of school hours care service for families whose children attend Tyndale's primary school (K-6). It operates under the national quality framework and the program is guided by the "My Time, Our Place" framework for school aged care.

Tyndale before and after school care value each child and their relationship with God. Educators actively nurture their God given gifts and talents and partner with both the school and families to equip students for a life of service as disciples of Jesus Christ.

Educators provide play and leisure opportunities that are meaningful and support children's wellbeing, learning and development.

Quality experiences are presented for rich learning, and children are to be curious about the world God has created for them to explore.

In order to create an inclusive, safe and stimulating environment that encourages all children's participation, educators develop programs in collaboration with the children and families that attend the service. The vacation care program is informed by the children's interests, ideas and feedback and designed to engage children in experiences that promote social and emotional development.

Tyndale before and after school care values family and community engagement and aim to build collaborative partnerships that complement the learning that occurs at home and at school.





## Early Learning Centre

The Tyndale Early Learning Centre is a high-quality long day care environment that encompasses a Preschool for children from 3 years of age, and a Prep program for children who turn 4 years of age by 31st July.

The Preschool program focus is on independent learning and social skills with a specific emphasis on

play-based learning. Preschool is available to children who have reached 3 years of age.

Prep is a school readiness program designed to provide young children with opportunities to maximise their potential and develop a foundation for future success in learning.



Prep caters for all children who turn 4 years of age by 31st July and therefore are eligible to commence Kindergarten in the following year.

Tyndale recognises and values the sound educational theory and practice underpinning the Early Years Learning Framework, an Australian Government mandated program for delivering learning experiences for children 0-5 years.

Both Preschool and Prep use the school's Biblically informed world view to interpret and implement the Framework, and has recently been assessed by the NSW Department of Education and received a rating of 'Exceeding the National Quality Standard.'

In order to engage children actively in learning, educators identify children's strengths and

interests, choose appropriate teaching strategies and design the learning environment to enable children to explore and make connections between prior experiences and new learning opportunities.

### **"Children thrive when families and educators work together"**

At Tyndale Early Learning Centre we value the role of families as the children's first and most influential educators. Children thrive when families and educators work together in partnership to support young children's learning.



## Primary K-6

Tyndale's Primary School offers a Christ-centred education that is foundational in the overall development of our students. Our young learners begin their educational journey in a learning environment that seeks to enthuse and inspire them to be curious and grow in their faith and knowledge about God and the wondrous world He has created.

It is in Primary School that students learn essential knowledge and skills across all Key Learning Areas, that will enable them to become effective, lifelong

learners. We are dedicated to provide students with the greatest chance of developing these skills in a supportive, and purposeful school environment. Learning of foundational concepts, skills and strategies are given priority within the class timetable, with a significant proportion of time spent on Literacy and Numeracy each week. Students are focused on exploration and learning in our Primary school classrooms. Dedicated teachers explicitly teach knowledge, skills and strategies and employ important engagement strategies to help



develop tenacious, courageous, and responsible learners. Instructional Leaders work alongside our Primary School staff, so that teachers are equipped to develop their ability to implement effective and current teaching strategies in the classroom. As a school we have implemented staff mentoring programs and practices that develop the quality of teaching and learning.

### **“Each child is encouraged to accept the challenge of personal improvement”**

It is our hope that the key knowledge and skills that students develop in Primary School enables them to become faithful and servant hearted members of classroom communities and beyond. Students learn to work collaboratively with their peers, in order to learn from and support one another, learning to be God’s person in His world. Each child is encouraged to accept the challenge of personal improvement and to work to the best of their ability with the support and encouragement of staff and peers.

All curriculum at Tyndale is presented from an underlying assumption that this world is God’s world.

While Primary School curriculum meets the requirements of NSW Education Standards Authority (NESA), it also views all aspects of life from a Biblical perspective. In all Key Learning Areas (KLA) we therefore point towards the creator and author of life. Christian input is not limited to Devotions or Biblical Studies programs, but impacts and influences all areas of education.

### **Primary School Subjects**

- English
- Mathematics
- Biblical Studies
- GIFTS: Growing Individuals For Thanksgiving and Service: Incorporating HSIE and Science & Technology
- Personal Development/ Health/Physical Education
- Creative and Practical Arts: Including Visual Arts, Drama

### **Students attend classes taught once a week by specialist teachers in:**

- Music
- Library
- LOTE: Korean
- Digital Technology (once a fortnight)



## Junior Secondary 7-9

Over the extent of a student's time in Secondary School, they undergo exponential growth and change. At Tyndale, it is our desire to provide students with support structures that enable them to flourish throughout this era in their lives.

In Junior Secondary, we aim to meet the unique needs of young adolescents by providing them a supportive environment that focuses on learning, growing and serving as part of a secure, nurturing Christian community.

Students in Year 7 often find themselves in unfamiliar territory as they transition between learning in Primary School to learning in Secondary School. This can be a challenging time for our young people because they often struggle with a lack of identity and belonging as well as physical

and emotional changes that they don't understand. An emphasis on fostering strong relationships and vibrant learning dispositions that will contribute to students flourishing relationally and academically demonstrates that Tyndale is a place where we strive to honour Jesus Christ in all of life and serve each other in response to His love for us.

Tyndale's Junior Secondary program reflects that students are image bearers of God who are unique individuals, created to glorify God and serve Him. In addressing their needs, it is our intention to train students to take responsibility for their learning and to assist them to be equipped to take on the challenges of Senior Secondary School with confidence.



**“Support  
structures that  
enable students  
to flourish...”**



## Senior Secondary 10-12

The Senior Secondary School curriculum builds on, and fine-tunes, the skills built in younger years by offering strong academic and elective programs with the widest possible range of learning experiences.

The Senior years of Secondary education are critically important in fostering students to be tenacious and curious learners, and discerning, critical thinkers who strive to do their best. Through developing their skills, knowledge, interests and attitudes, students are encouraged to grow in their character and giftings and to be responsible contributors locally and globally. As students in the Senior Secondary are supported to negotiate the challenging journey towards young adulthood, it is our desire that they view their future educational and vocational opportunities as avenues to serve


God. Importantly, therefore, Senior School learning is supported by enthusiastic Christian teachers who are there to listen, advise and inspire students on this journey.

During these Senior years of education, when young people are asking key questions concerning identity and meaning, our teachers are ready and able to help them make sense of their world and their culture, and to find purpose in their lives now, and in the future.

A capable team of Key Learning Area Coordinators (KLA), who are experts in their respective fields, are available to assist students in their academic pathways. Our KLA Coordinators lead their respective faculty teams, seeking to bring effective teaching and deep learning from a supportive, Christian perspective.





A photograph of two young women in a kitchen environment. They are both wearing white chef coats, dark denim aprons, and black chef hats. The woman on the left is looking down at a piece of paper she is holding. The woman on the right is looking up at her and smiling. In the background, there are kitchen shelves with various items, including what looks like a stack of metal trays or pans.

**“our teachers are  
ready...to help them  
make sense of their  
world”**



## Music @ Tyndale

Students at Tyndale will experience Music in a variety of ways. The wonderful God-given gift of music is explored as students work with specialist teachers in classes from Preschool through to Year 12. Music classes include experiences in listening, performing and composing.

The Music course is a mandatory part of the curriculum in Preschool - Year 8, and is then offered as an elective in Years 9 - 12. The co-curricular music program at Tyndale runs in conjunction with the classroom curriculum and offers a wide variety of opportunities for students to experience and develop their gifts in this area.

Students are encouraged to recognise that we are all given the gift of music and individually need to discover how we can explore, develop and utilise this gift.

Students in Music have the opportunity to perform and participate in a number of events held annually at the school:

- **Inspire**  
A night of celebrating music performances by Primary students
- **Illuminate**  
A showcase of Major Works from Year 12
- **Engage**  
A celebration of the Creative and Performing Arts in Years 9-11.
- **Big Band Bash**  
An in-school music retreat for Band members.

Students may also display their musical gifts at assemblies, eisteddfods and other school events.

### **Instrumental Ensembles**

- **Year 5 Band**  
Students are introduced to concert band instruments in the Year 5 Band Program, where every student is provided with an instrument and music resources.

- **Concert Band**  
Concert Band includes students from Year 6 and Secondary School and gives members the opportunity to take their musicianship and performance skills to a higher level
- **Praise and Worship Bands**  
A number of Praise and Worship groups have been formed by students and staff at Tyndale. These are informal groups, which rehearse weekly and may lead worship at assemblies and other school events.
- **Other Ensembles**  
Depending on interest, other ensembles such as Jazz, String, Percussion or Contemporary Bands may be formed to provide further opportunities for students with talents in these areas.

### **S.A.L.T.**

The Sound and Lighting Team is a group of students and staff that are enthusiastic and interested in providing sound and lighting support for many events at Tyndale.

# Sport @ Tyndale

Each student is encouraged to participate in sport to the best of their ability and a wide range of sports are offered each year.

Tyndale plays representative sports through various organisations, including the Christian Schools Sports Association and the Combined Independent Schools. There is also a weekly Inter school Sports Competition.

A range of sports are available for students in Primary School through weekly Sport lessons and inter-school gala days. In 2021 Year 3 to Year 6 students will also have the opportunity to be involved in Interschool Sport with other local Christian schools.

## Representative Sports

Students in Years 7-12 can participate in the weekly Inter School Sports competition. There are different sports offered including Volleyball, Soccer, Netball, Basketball and Touch Football. There are also a number of Trials and Gala days for a variety of different sports in which students in Primary, Junior and Senior Secondary School will be able to participate throughout the year.

## Carnivals

Students in the Secondary School will participate in Swimming and Athletics carnivals each year. Zone and State level representation will occur at Primary and Secondary levels also.









## Learning Support

The Tyndale Christian School Learning Support team uses the Response to Intervention (RTI) model to identify, intervene and monitor students so as to cater for the learning and social-emotional needs of all students. The RTI model is designed to give three increasingly intense levels of support with the underlying philosophy that all students can meet their potential if given appropriate intervention.

The Tyndale Christian School Learning Support team work collaboratively with classroom teachers to provide:

- Tier 1 whole class high quality instruction with day to day adjustments to instructional delivery.
- Tier 2 small group intervention through evidence informed Literacy, Numeracy and Social Skill programs.
- Tier 3 personally tailored one to one intervention where coursework and assessments are modified to meet the learning needs of individual students.

## Pastoral Care

At Tyndale the pastoral care and discipline of students takes place within the context of relationships. Teachers work hard to develop strong relationships with students, both in the classroom and during extra-curricular activities, such as camps, excursions, clubs and small group meetings. Within the context of a supportive community, teachers, acting in partnership with parents, seek to disciple students towards genuine Christ-like behaviour, modelling and encouraging mutual respect, integrity and accountability. Guidance and correction are part of the making of a disciple; a follower of Jesus Christ.

**“It is our aim to encourage all students to grow in their Christ-likeness”**

In Primary School, we are committed to taking a keen interest in the welfare of children in our care. This may mean considerable time spent listening to students and guiding, counselling and advising them. Class teachers play a significant role in this process and are supported and assisted by Stage Coordinators, the Assistant and Head of Primary School and Head of Primary School.

It is important that teachers work together in partnership with parents so that together we can nurture students.

As staff, it is our aim to encourage all students to grow in their Christ-likeness, which often can only come after the establishment of caring relationships with students.

Students in Secondary School meet regularly in Pastoral Care groups, each led by a member of staff. These small group gatherings enable students and teachers to connect with each other in a more relaxed context and build on classroom relationships. Students and teachers share in Bible Study and prayer and discuss issues and concerns, engage in formal and informal programs that are designed to cater for the mental health, spiritual and physical well-being of the students based on a Christian and Biblical context, as well as focusing on the development of healthy habits of mind and learning dispositions. Year Welfare Advisors monitor students' progress and are always available to individual students and their parents.

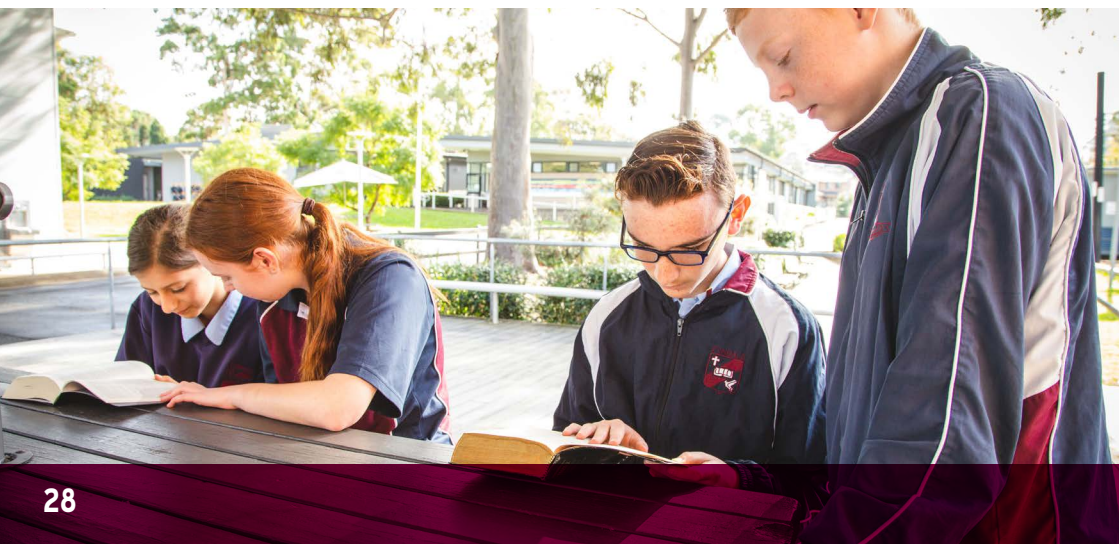


# Student Leadership

The Student Leadership Council (SLC) is a representative group of students in Years 5 to 12, elected by school staff and their fellow students, to represent them and participate as leaders in the school.

The aim of the (SLC) at Tyndale is to encourage students who are willing to have a greater role in serving the school community, through a Biblical principle of leadership. The SLC's primary purposes are discipleship and servanthood (being the heart/hands/head/feet of the student body) in order to glorify the Father, and to be a Christ-like witness to the student body and wider community.

It provides a structure where students are given a voice and are equipped to lead others in promoting service opportunities within the school. This secondary focus is to provide a forum for students to address issues about which they are interested. Students will, where appropriate, receive help to achieve goals related to pursuing these particular interests.



# Service Opportunities

There are a variety of ways in which students are encouraged to serve others as an outworking of faith including:

- Buddies Program (Primary School)
- Student led Clubs
- Recycling and other sustainability projects
- Buddies Program (Partnering overseas students)
- Fusion – A weekly co-curricular program and for all students in Years 7-11
- Mission Fundraising
- Student Leadership Council (with associated leadership training)
- Years 9-12 specific service (focus through subject electives)
- Junior Secondary School (messenger service)
- Community events
- Leading lunch groups (Primary and Secondary)
- Peer Support
- Student Mentoring
- Leading and speaking at assemblies
- Small group building projects (within the school)
- Year 10 Service week
- Year 10 Overseas Mission trip
- Year 11 Overseas Mission trip
- Year 12 Overseas Mission trip



# How to Join Us

## Take a Tour

If you are considering enrolling your child at Tyndale, you are very welcome to call us to arrange a tour of the school to get a first-hand insight into life at Tyndale.

## How do I enrol my child?

Enrolment at Tyndale generally involves an initial enquiry, a tour, an application, an interview, application approval, a placement offer and acceptance. **You can find more details and an application form on our website at [www.tyndale.edu.au/enrolment](http://www.tyndale.edu.au/enrolment)**

It is important that all parents/guardians/carers (living with the child or children) must attend an enrolment interview. At the time of interview there will be ample opportunity for you to ask questions and have a tour of the school if, you have not done so previously.

All prospective students from Years 1 - 12 will undertake a literacy and numeracy assessment prior to enrolment to assist the school in determining the correct placement in year group and course.

## Enrolment Applications

The main entry points for new enrolments are Preschool, Prep, Kindergarten, Year 7 and Year 11. Limited places are also available in other year levels.

Places for certain year levels fill quickly so please return your application as soon as possible to commence the enrolment process.

## Enrolment Enquiries

Please email [enrolment@tyndale.edu.au](mailto:enrolment@tyndale.edu.au) or call (02) 8811 7800.







**Tyndale**  
CHRISTIAN SCHOOL

P: 02 8811 7800 | E: [office@tyndale.edu.au](mailto:office@tyndale.edu.au)  
58 Douglas Road, Blacktown NSW, 2148 Australia

CRICOS Provider Code 02273C

Tyndale Christian School is a registered business name of The Association  
for Christian Education of Blacktown Ltd ABN: 51 000 391 186